



THE CHOICE OF LIVESTOCK PROFESSIONALS

CATTLEYARD OPTIONS

1300 655 383

www.proway.com.au

Proudly Australian designed and manufactured



ProWay

Livestock Equipment

CATTLEYARD OPTIONS

CONTENTS

CATTLEYARDS OPTIONS

- Rotary Force
- Pound Yard
- Elevated Walkways
- Manways
- Undercover Work Areas

PAGE 04 - 05

RACE OPTIONS

- H-Race $\frac{3}{4}$ Sheeted Inside, Fully Outside
- V-Race $\frac{3}{4}$ Sheeted Inside, Fully Outside
- Adjustable Sided Race
- V-Overhanging Rail
- Sliding Gates
- 3 or 5 Way Manual Drafter
- Cattle Weighbox
- Fully Sheeted Calf Race

PAGE 10 - 11

RAIL OPTIONS

- 120 Cattle Rail
- 97 Cattle Rail
- 50NB Pipe Rail
- 40NB Pipe Rail
- 32NB Pipe Rail
- Cooler Fence (Cable Backyards)

PAGE 06 - 07

PNEUMATIC OPTIONS

- Remote and Stationary Controls
- Pneumatic Rotary Force
- Pneumatic Rotary Block Gates
- Pneumatic Race Draft
- Pneumatic Auto or Remote Drafter

PAGE 12 - 13

GATE OPTIONS


- Standard Chain and Catch (97CR, 40NB, 32NB)
- Standard Chain and Catch (120CR, 50NB)
- Overhead Bracing
- Spring Loaded Bolt Catch
- Lever Haz Catch
- Poplar Slam Catch

PAGE 08 - 09

RAMP OPTIONS

- Eco Mobile Ramp
- 19 Degree Loading Ramp
- 12.5 Degree Loading Ramp (with level extension)
- Adjustable Under and Over Loading Ramp
- Under and Over Loading Ramp
- 8m Adjustable Loading Ramp

PAGE 14 - 15



At ProWay, we pride ourselves on innovation. We are proudly involved in the progression of livestock handling technology.

ProWay have a range of features that are catered to various livestock markets. Our custom design service provides ProWay customers with unique solutions, meaning no two facilities are ever the same.

When developing products and custom facilities our focus is on:

STOCK FLOW

LABOUR EFFICIENCY

OPERATOR AND ANIMAL SAFETY

SUITABILITY OF MATERIALS

IMPLEMENTING TECHNOLOGY

ProWay designs and products have been refined over time through research, testing and most importantly, feedback from our customers.

For more information on our design service or any products listed, contact ProWay Livestock Equipment.

Call: **1300 655 383** Fax: **02 6931 8410**

Email: **information@proway.com.au**

www.proway.com.au

Post: PO Box 85, Wagga Wagga, NSW 2650

Office and workshop: 19 Bomen Rd, Bomen NSW 2650

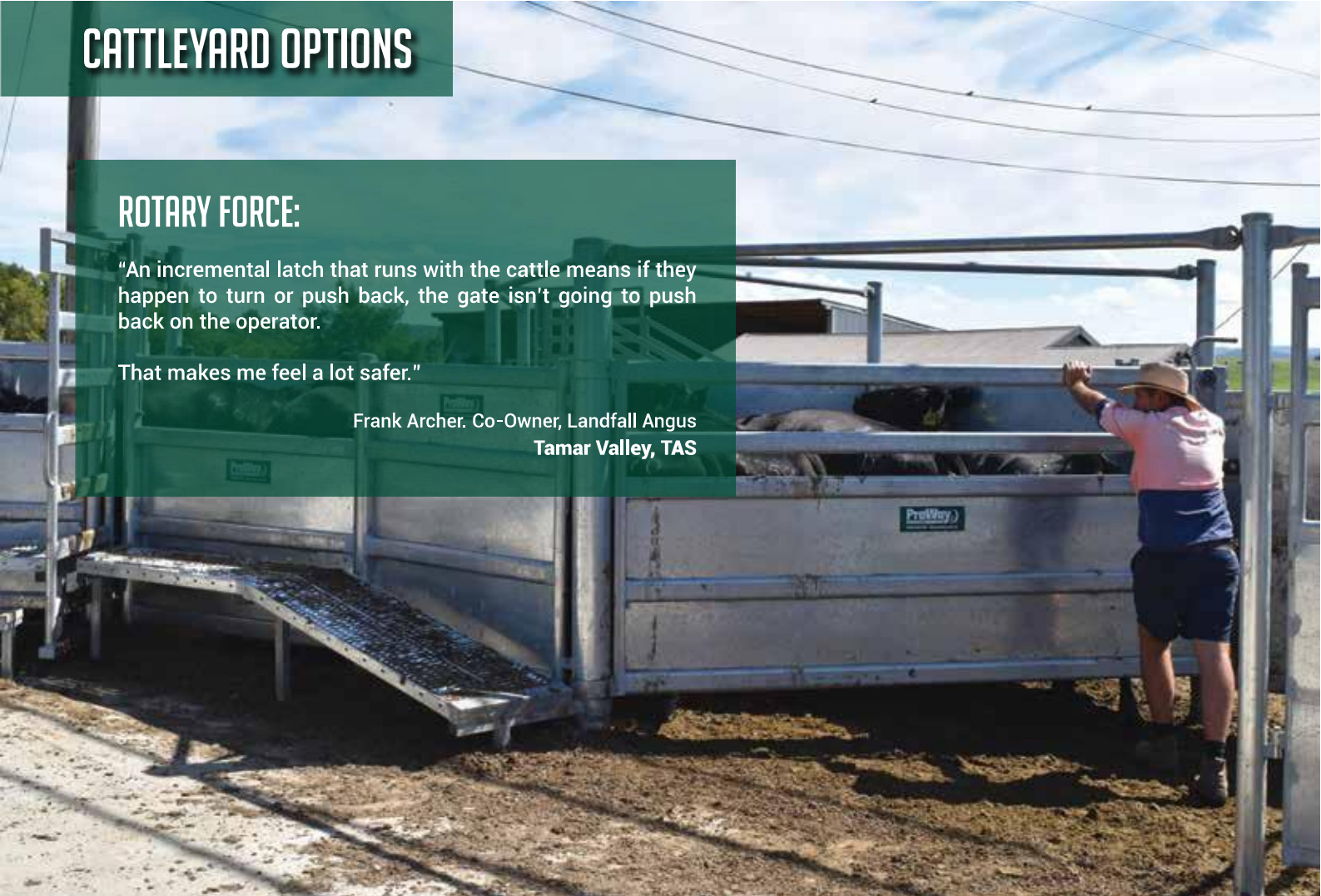
Regionally based designers servicing clients across Australia

ROTARY FORCE:

"An incremental latch that runs with the cattle means if they happen to turn or push back, the gate isn't going to push back on the operator.

That makes me feel a lot safer."

Frank Archer, Co-Owner, Landfall Angus
Tamar Valley, TAS



Rotary Force

- The cattle rotary force has a gate designed to follow the cattle around, reducing the area which encourages cattle to enter the race.
- The padded brake moves around the rolled panels locking into position which stops cattle from backing up and keeping the operator out of harm's way.
- Braced overhead for strength and durability.
- The centre post is heavy duty galvanised 150NB (165mm OD).
- With sheeted panels to aid stock movement and operator safety, the Cattle Rotary Force separates the handler from the stock in the forcing pen removing the need for a handler to be in the yard with cattle.



Pound Yard

- The pound yard is often used as an entry to the working area allowing multiple yard access to the force and up to 7 directions.
- Each gate includes a chain and catch and are braced overhead for extra strength.
- ProWay can also design a crow's nest or raised platform for overhead drafting. These structures have the ability to open and draft from one raised position and are equipped with non-slip stairs and hand rail.
- The gates can also be fitted with an "anti-lock" bar for quick closing when drafting from above.





Elevated Walkways

- ProWay walkways allow the operator to be elevated to a safe, comfortable working height above stock.
- By following the walkway around the force yards and race, the operator is able to encourage stock flow from a more commanding position.
- Non-slip walkway mesh.
- Cut and installed onsite to ensure a neat and robust fit.
- Concreted in ground for strength.



Manways

- Placed strategically around your design where quick access is required.
- Manways are available in all ProWay standard rail types.
- Vertical spring catch and braced overhead for strength.
- 600mm wide to allow operator access and keep cattle out.
- They provide quick safe access around your yards.
- Implemented in key areas within the yard design to maximise efficiency, particularly in the force and working areas.



Undercover Working Areas

- Our undercover working areas provide weather protection to operators, stock and yards to increase efficiency, productivity and longevity of stockyards.
- Made from heavy duty steel construction with colourbond or zinc roofing options, ProWay are able to organise erection during construction of yards ready for the first yarding.
- ProWay are able to design your shed around your yards, or design yards around an existing shed to maximise coverage and utilise columns and space.



PROWAY HAVE A RANGE OF FEATURES THAT ARE CATERED TO VARIED AUSTRALIAN CATTLE OPERATIONS

By designing stockyards that utilise natural stock movements and instincts, ProWay provides a safer and less stressful working environment for both livestock and operator.

CATTLEYARD OPTIONS

WE BUILD YARDS TO FIT THE DESIGN RATHER THAN DESIGN AROUND FIXED LENGTH PANELS

At ProWay, our aim is not to mass produce panels. It is to build cattleyards and livestock handling solutions that specifically cater to an individuals capacity operation and site.



STANDARD RAIL OPTIONS



120 Cattle Rail

- 120CR panels and gates stand at 1750mm and include 5 x 120mm rails and 100NB galvanised pipe posts.
- Panels are generally made with a post at one end and a curved plate at the other which are welded on site.
- The 120 x 48mm rail is an excellent visual barrier, while the 2mm wall thickness and DuraGal® zinc coating provide the highest strength and longevity on the market (min. zinc coating 100g/m3).
- 120CR is generally utilised on tropical cattle operations, however has been applied to southern ProWay facilities and cattle studs where high strength is paramount.



97 Cattle Rail

- Cattle panels are made from five 97 x 42mm cattle rails and stand at 1.75m
- ProWay's cattle rail has been developed specifically for use in yards. It is made from high tensile (grade 450) galvanised steel.
- Panels are generally made with a post at one end and a plate at the other which are welded on site.
- All panels are made to order for each individual yard design.
- All ends of the rail are notched for the neatest and strongest join to round posts.



50NB Pipe Rail

- The 50NB pipe rail range is available in a 5 or 6 rail configuration and is built with 50NB (60.3mm OD) galvanised pipe rails.
- Rails are crimped and welded to fully galvanised 80NB (88.9mm OD) posts.
- 100NB post upgrade is available for extra strength and longevity.
- Panels and gates are braced for strength when over 2.5m.
- All panels are made to order for each individual yard design.
- We build panels to fit the design rather than design-fit fixed length panels.





40NB Pipe Rail

- The 40NB pipe rail range is available in a 6 rail configuration and are with 40NB (48.3 OD) galvanised pipe rails.
- Rails are crimped and welded to fully galvanised 80NB (88.9mm OD) posts.
- 100NB post upgrade is available for extra strength and longevity.
- Panels and gates are braced for strength when over 2.5m.
- All panels are made to order for each individual yard design.



32NB Pipe Rail

- The 32NB pipe rail range is a lighter alternative to the cattle rail made from six 32NB (42.4mm OD) rails and stands at 1.75m.
- It is an economical alternative for backyards and holding yards.
- Rails are crimped and welded to fully galvanised 80NB (88.9mm OD) posts.
- Panels and gates are braced for strength when over 2.5m.
- All panels are made to order for each individual yard design.



Cooler Fence (Cable Backyards)

- ProWay can supply two different cable options which are suitable for backyard and large holding pens at a reduced cost to the standard panel range.
- Posts come pre-drilled and are fitted with cable plugs for longevity.
- Strainer assemblies are supplied.
- Cable needs to be threaded on site.
- Post spacings are generally 2.5m with the following options:
 - 2 x 50NB rails, 6 cables
 - 1 x 50NB rail, 7 cables



A KEY FOCUS FOR ALL PROWAY PRODUCTS AND FACILITIES IS LONGEVITY

Well constructed cattleyards will last a lifetime and make your livestock operation more efficient and profitable with less stress and bruising on stock.

"By putting in ProWay yards, we've saved sixty to seventy percent of our time handling cattle. It's just so easy."

These yards are second to none and the best thing about it - it's just state of the art."

Bill and Alison Ryan, Acacia Downs
Lower Acacia Creek, QLD

Standard Chain and Catch (97CR, 40NB, 32NB)

- 97CR, 40NB and 32NB gates without spring catches come with a galvanised 8mm inverted "T" slot for overnight use and a quick slot for normal use.
- A galvanised 8mm chain is welded to the gate and locks into the slot around the appropriate post in the yards.
- The chain also allows gates to be chained back to fences or together with other gates if required.
- Double gates are fitted with an upgraded 12mm "L" plate and a 10mm galvanised chain for extra strength.



Standard Chain and Catch (120CR, 50NB)

- 120CR and 50NB gates are fitted with a heavy duty 12mm "L" slot that is welded to the rail.
- An upgraded 10mm galvanised chain is welded to the gate and can be slotted into the "L" for long term holding or into the quick slot for efficient use.
- The chain also allows gates to be chained back to fences or together if required.



Overhead Bracing

- Gates can be upgraded to include overhead bracing where applicable.
- Single gates are braced with a 40NB pipe.
- Double gates span over 3.1m are braced with 50NB pipe.
- Gates are braced at 2.2m (from the ground) as standard or up to 3.3m for throughways which require high clearance (i.e. horseback/machinery).





Haz Catch

- Standard on all 97CR, 120CR and 50NB gates (except double gates).
- The catch has been developed and patented by ProWay as an effective multi-purpose, heavy duty gate catch.
- For safety, it is fully contained within the line of the gate and not welded onto the side of the gate.
- The catch can be locked open in one movement, so that no part of the bolt is exposed. This eliminates the chance of injury to cattle particularly when drafting with a gate.
- The ring pull bolt system is simple to operate from either side of the gate and closes into a fitted pocket on the opposing post.



Lever Haz Catch

- Developed and patented by ProWay.
- For animal safety, the catch is fully contained inside the gate, not welded on the side.
- This prevents bruising to stock and limits damage to the catch itself.
- The catch can be locked open in one movement, so that no part of the bolt is exposed.
- Lever haz catches are particularly useful in situations where catch access is limited.
- Generally, these catches are installed on the outside of sheeted gates, or where gates need to be operated from a walkway.



Poplar Slam Catch

- Poplar slam catches are another option for our standard gate range and are fitted to one side of the rail.
- Due to the lever handle, gates fitted with poplar catches are simple and quick to open and can be thrown shut.



ProWay's mission is to provide superior customer experience, proven livestock handling solutions, quality custom design, robust build quality and productivity/profitability advantages for all of our customers.

We proudly design and manufacture in Australia, adhere to Australian standards and strive for quality throughout our entire range.



H-Race $\frac{3}{4}$ Sheeted Inside, Fully Outside

- The H-Race has full sheeting on the outside of the race preventing distractions outside of the working area from effecting stock flow.
- The inner arc of the race is sheeted $\frac{3}{4}$ of the outside height to allow visibility and access to stock.
- Races are available at any length and are designed with suitable radial arcs to promote stock flow.
- Strength is given by the combination of a heavy duty galvanised frame and underground bracing which is concreted into the slab work.
- ProWay can also build non-sheeted H-races using any of our standard rail options.



V-Race $\frac{3}{4}$ Sheeted Inside, Fully Outside

- The V-race includes a fully sheeted outer arc which prevents legs and heads getting out and improves stock flow.
- These sections are also made as safety release gates. They can be quickly opened to free overturned stock with two bolt catches (both high and low) so gate sections have no flex.
- The inner arc of the race is sheeted $\frac{3}{4}$ of the outside height to allow visibility and access to stock.
- The 'V' profile also minimises the chance of small stock turning around in the race.
- The curve of the design gives better draw up the race, with stock circling past the operator.



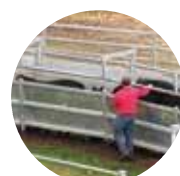
Adjustable Sided Race

- The lever operated system allows for quick adjustment between widths of 850mm and 600mm at increments of 50mm.
- The race gives flexibility to your enterprise as there is suitability for multiple breed, size and age operations.
- It also stops smaller cattle turning around which can occur in a standard fixed width race.
- It can be implemented to suit both curved and straight race options.
- Eliminates the necessity of a calf race.
- Optional overhanging rail allows unrestricted access to cattle.
- Can be adapted to pneumatic or sliding race gates.



Overhanging Rail

- For effective working of stock in the race, ProWay have developed an overhanging bracing system that allows fluid movement for the operator while treating cattle, without jeopardising strength and top rail height.
- Without the overhanging rail there are points in the race that can be hard to access.
- The overhanging rail has a continuous gap that allows access to cattle at any point within the race.





Sliding Gates

- Two styles of sliding gates are available.
- The conventional pull out sliding gate has no overhanging track on the operators side. The gates are reversible and can be used from either side. They open towards the operator.
- The alternative style is designed for use with walkways. The gate opens away from the operator, so that the walkway is not blocked by the open gate. It is operated by a lever type handle which drops down out of the road. It also features no overhead gear on the operators' side.



3 or 5-Way Manual Drafter

- The cattle 3 or 5-way manual drafter provides quick and safe drafting in front of a crush.
- It is designed with access gates and slam catches for quick and safe access to animals.
- 97 Cattle Rail rails for strenght and non-bruise.
- 80NB posts for strength.
- Sliding gate can be used as a baulk gate.
- Rubber stoppers for quiet operation.
- Hot dipped channel base for longevity.



Cattle Weighbox

- ProWay's cattle weighbox is all galvanised steelwork and designed to suit all cattle sizes.
- The offside is made from timber for EID compatibility.
- The nearside is sheeted with galvabond sheeting and adjusts to suit different sized cattle.
- Added features include:
 - Hanging weighbars that sit above the box on 'U' hoops.
 - A front sliding door – or one made for rear operation.
 - A one side gate for drafting and/or safety release.
 - An adjustable side to stop animals turning around.



Fully Sheeted Calf Race

- The ProWay calf race is 1.1m high to stop bigger calves jumping out.
- It has slam shut gates at both ends for quick closing and can include a sliding gate positioned to hold one calf before the cradle.
- The race length is determined by the size of the operation and panels can be unsheeted on request.
- Depending on requirements, ProWay can also supply a baulk bar to stop calves jumping out or over each other.
- An overhanging rail can also be included.



CATTLEYARD OPTIONS

ProWay have a range of pneumatic solutions that can improve your labour efficiency and reduce the WH&S hazards associated with stock work, allowing you and your staff to work safer while increasing productivity.

We work with you to ensure your facility is suited to your needs. Every customer receives a design optimised for their unique operation.

PNEUMATIC OPTIONS



Remote and Stationary Controls

- ProWay pneumatic solutions have been developed to ensure your facility maintains the best safety, efficiency and longevity on the market.
- We offer three solutions for pneumatic control, including handheld wireless remote, individual button operation and stationary control box. We can cater from 2 – 16 individual operations.
- ProWay customise every system depending on your requirements and can include a combination of these control units.
- Depending on the number of pneumatic locations in your design, ProWay will advise on the required air compressor and ideal control options.



Pneumatic Rotary Force

- The pneumatic rotary force is designed to maximise efficiency. It removes the need to get inside the force area with cattle, eliminating the risk of injury.
- The force operates with the press of a button and can be operated from a walkway for continuous flow into the race.
- Fully galvanised heavy-duty construction with industrial grade pneumatics to ensure longevity.
- The padded brake moves around rolled panels, locking into position and stopping cattle from backing up, encouraging them to enter the race.



Pneumatic Rotary Block Gates

- ProWays pneumatic rotary block gates are remote controlled and operate within the race.
- The gates pivot on a central axis from open to closed in one motion.
- Industrial grade pneumatics for longevity.
- They are operated with a control box and compressor that can be set up for other pneumatic processes.
- Safely stops cattle in the working race without any risk to operators.
- Able to operate gates from anywhere in the yards avoiding spooking cattle as with conventional sliding gates.





Pneumatic Race Draft

- The pneumatic race draft is installed within the race frame to allow drafting before the crush.
- Handheld remote for flexibility allowing the operator to draft from anywhere in the yards.
- Sheeted panels are installed to encourage stock flow.
- It also has a heavy duty galvanised construction frame with industrial pneumatics for longevity.
- Manufactured to suit radial arc of the race, for straight or curved designs.



Pneumatic Auto or Remote Drafter

- Developed to dramatically reduce labour when drafting through the crush.
- Can be used for a 3 or 5 way draft for quick and safe drafting.
- Built with oval rail for strength and hot dipped channel base for longevity.
- Rubber stoppers for quiet operation.
- Industrial grade pneumatics for longevity.
- The autodraft control box allows units to be used as an auto drafter or remote drafter.



OUR PRODUCT RANGE CONTINUES TO IMPROVE BASED ON DIRECT INDUSTRY FEEDBACK

"The efficiency gains of this pneumatic set up is one of the key advantages. The cattle just move through the Rotary Force, V-Race and Draft without stress."

John Ashby, Manager, Thomas Food International Feedlot
Tintinara, SA

PROWAY HAS A VAST RANGE OF LOADING SOLUTIONS FOR VARYING REQUIREMENTS

We pride ourselves on our loading ramp range which is a result of years of research, product development and customer feedback. All ramps have been designed with input from livestock carriers and meet industry guidelines.

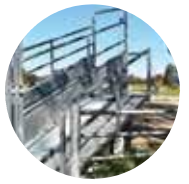


RAMP OPTIONS



Eco Mobile Ramp

- The eco mobile cattle ramp is an adjustable trailer to truck ramp and an effective solution for loading between trailers, utes and the first deck of stock crates.
- Sheeted to a height of 1 metre, the galvanised construction prevents legs from getting through the ramp for cattle loading safety.
- With wheels, leaf type suspension and a convenient swing aside pull, the ramp provides the added flexibility of mobility.
- The ramp can be towed between multiple yards or properties or included on relocatable yard designs.



19 Degree Loading Ramp

- Rises over 3.3m (optional 1.6m level extension).
- Sheeted cattle rail sides are included for stock safety as well as a walkway and handrails for operators safety.
- A truckie access door and sliding gate at the truck end allows for the flow of cattle to be stopped when required with a swivel buffer board, eliminating the long gap between ramp and truck.
- Designed for a stepped concrete floor to be poured on site (concrete not included).



12.5 Degree Loading Ramp (with level extension)

- Rises over 5.0m (plus 1.6m level extension).
- Galvanised construction with non-slip walkway and handrail for operator safety.
- Sheeted cattle rail sides are included for stock safety.
- Access door and sliding gate at truck end.
- Swivel buffer board eliminates gap between the ramp and truck.
- Designed for a stepped concrete floor to be poured on site (not included).





Under and Over Loading Ramp

- Heavy duty, galvanised frame with level extension for better cattle flow.
- Can be built to suit a 1m retaining wall or rise from ground level.
- Stepped concrete floor that must be poured on site.
- Non-slip stairs and safety walkway to both decks.
- Sliding gates at the truck end and a truckies access door closes across the ramp to prevent operator injury.
- Side loading compatible with a self-aligning swivel buffer, bat wing doors and a drop over truck bridge.



Adjustable Under and Over Loading Ramp

- Utilises an internal floor that can move from the bottom to the top deck height with a heavy-duty hand winch.
- Flexibility of dual deck loading, with the economy of single walkway.
- Walkways on both decks are Australian Standards compliant.
- Cattle rise to top deck height over 10 metres giving good stock flow with all classes of cattle.
- First grade steel construction.
- Suitable for rear or side loading.
- Bat wing doors for side loading and sliding gate at truck end for both decks.



8m Adjustable Loading Ramp

- The ProWay 8m adjustable loading ramp has been designed with, safety, longevity and efficiency in mind.
- It is engineer certified with fully sheeted 1.7m metre sides and viewing slot.
- Pressed chequer plate hot dipped flooring.
- Non-slip expanded mesh walkway (600mm wide) with hand rail, mid rail and toe board which all meet Australian Standards.
- Suitable for high volume loading facilities including saleyards, abattoirs and feedlots.
- Dump width upgrade available for unloading.



PROWAY CATTLE RAMPS ARE REGARDED AS THE BEST AVAILABLE ON THE MARKET

" I love this loading ramp, the handrails and walkway make it very safe and the added access gate allows us to efficiently load and unload our cattle."

Edward Proudford
Woodford - Narrawa NSW



THE CHOICE OF LIVESTOCK PROFESSIONALS

Head Office: 19 Bomen Rd, Bomen NSW 2650

Regionally based designers servicing clients across Australia

Phone: 1300 655 383

Fax: 02 6931 8410

E-mail: information@proway.com.au

ProWay 
Livestock Equipment

www.proway.com.au

