



“The design and planning process with ProWay was fantastic, several different little changes were easily done, they were very accommodating and it was very timely and efficient.

Tom Wilson | Farm Manager
Salt Creek Merinos, Woorndoo, VIC

CUSTOM BUILT & CUTTING EDGE

Premium materials, quality prefabricated components combined with cutting edge design and professional installation ensure your ProWay Shearing Shed will last for generations to come.

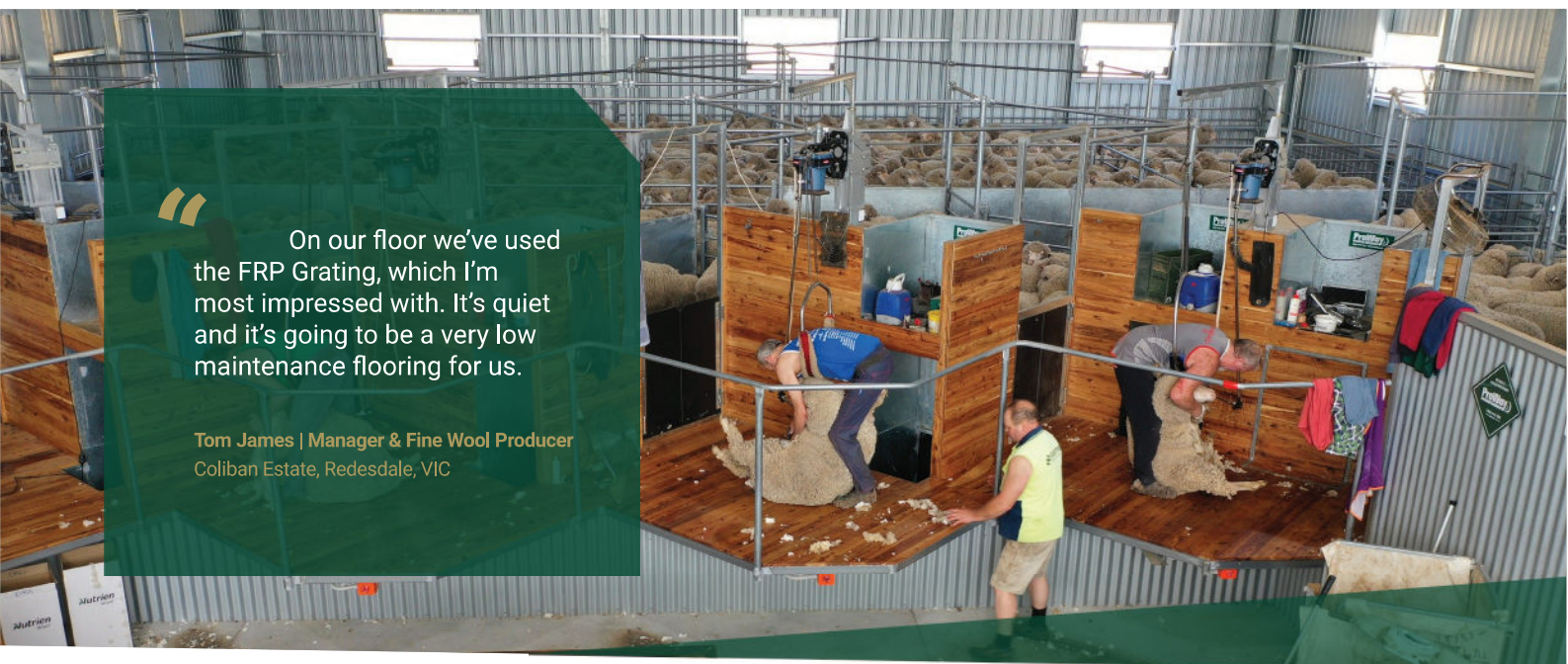
ProWay's Shearing Shed fitouts are proudly Australian made and are highly regarded as one of the safest in the industry. ProWay's Design and Engineering Teams have created facilities that meet stringent OH&S standards and are designed to be ergonomically safer for operators.

A new Shearing Shed fitout is a serious investment, our Designers will work with you every step of the way to ensure your facility is a safe, efficient and profitable asset for your operation.

ProWay offer a number of options ensuring your Shearing shed is tailored to your operational requirements, such as grating and flooring options, board configurations, lighting, ventilation and working areas.

Your Shed layout will be designed with accurate CAD software, showing dimensions, holding capacities, board options and your access points. New shed locations are mapped with satellite and drone technology to ensure a pinpoint accurate location that is optimised to factor in slopes, drainage, lighting and loading/unloading.

THE CHOICE
OF LIVESTOCK
PROFESSIONALS



On our floor we've used the FRP Grating, which I'm most impressed with. It's quiet and it's going to be a very low maintenance flooring for us.

Tom James | Manager & Fine Wool Producer
Coliban Estate, Redesdale, VIC

KEY SHEARING SHED DESIGN FEATURES

ProWay will factor a number of design configurations into your Shearing Shed fitout. Each can be tailored to suit your operational requirements whilst allowing for future growth & expansion.

Optimum Pen Design

We offer expert solutions for stock movement when penning up, including strategic placement of sheeted panels to promote sheep flow.

Lighting & Ventilation

Orientation of your shed is important, correctly positioned shutters, doors and removable lower panels maximise ventilation and regulate the temperature.

Slide Swing Gates

Our Slide Swing Gates offer versatility and allow for easier penning up. Able to swing 270° and slide back through a channel, eliminating the frustration of sheep getting caught behind gates or gates stuck shut when the pen is full of sheep.

Sloped Catching Pens

With proven ergonomic benefits, Catching Pens are sloped towards the board to aid shearers dragging out sheep and are incorporated with Slide Swing Gates to make for easier filling.

Chutes

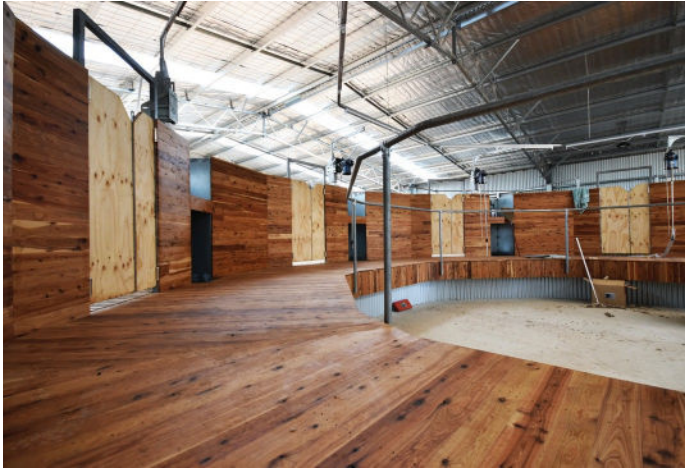
Recessed into the board for ease of release to send sheep under the grating. Fully galvanised frame and sheeting for maximum longevity. Angled at 54° sheep are released into count outs or as a single mob.

Count Out Pens

Depending on your requirements ProWay can build individual count out pens or a communal holding pen for shorn sheep under the grating. Individual count outs provide multiple lanes through to the back of the shed. We'll incorporate yard designs to work together with your Count Outs allowing the operator to process, draft and treat sheep after shearing.

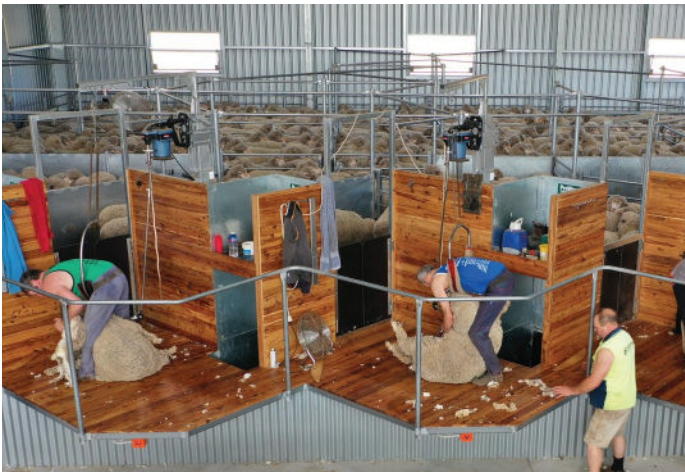
SHEARING SHED BOARD CONFIGURATIONS

Our three premium Board Configurations can be designed to suit existing and new shed structures. ProWay's Board Configurations include Curved, Sawtooth and Straight arrangements are finished with premium Australian timber.



Curved Board Configuration

- Individual stands around an arc, providing excellent vision
- Reduced drag out for shearers due to curved layout
- Increased workspace for each shearer
- Raised board allows full access for wool handlers, while working above their hips
- Recessed chutes with shelf for shearer tools and equipment storage
- Safety rails and electrical cut off switches as standard



Sawtooth Board Configuration

- ProWay's unique Sawtooth Configuration has been described by Work Cover as the safest they've ever seen
- Reduced drag out for shearers, with a straight drag to the board significantly reducing twisting
- Increased workspace for each shearer with improved visibility
- Raised board allows full access for wool handlers, while working above their hips
- Recessed chutes with shelf for shearer tools and equipment storage
- Safety rails and electrical cut off switches as standard



Straight Board Configuration

- Increased workspace for each shearer with improved visibility
- Raised board allows full access for wool handlers, while working above their hips
- Shelf above chutes for shearer tools and equipment storage
- Safety rails and electrical cut off switches as standard

GRATING OPTIONS

ProWay have a number of grating options available to suit your operational requirements.



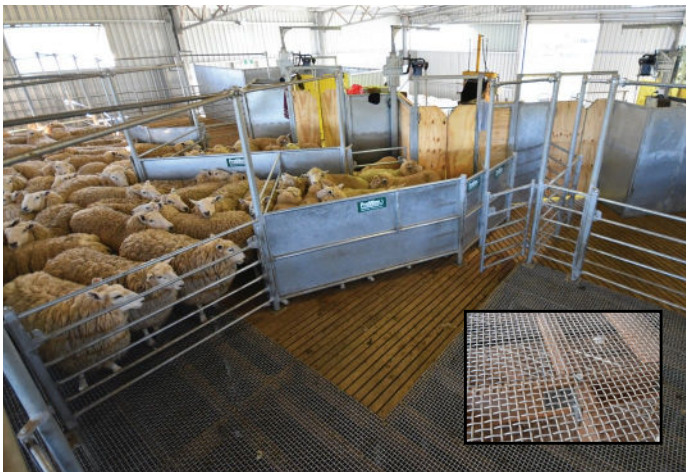
Hardwood (Mountain Ash) Grating

- Our standard grating is a 65x38mm Mountain Ash hardwood that is bevelled on one edge
- The bevel allows manure through with the wide edge facing up
- ProWay recommend hardwood grating for all Catching Pens, as they're smooth and sloped for an easier drag
- Grating is sourced for the individual job by reputable mills



Fibre Reinforced Plastic (FRP) Grating

- High strength and suited to shearing shed floors for its long life and durability
- Provides excellent grip and is suitable in holding pens
- Corrosion, fire and UV resistant
- Is extremely quiet without compromising sheep flow



Woven Wire Grating

- Galvanised woven grating is made of 5mm woven wire and has a 20mm spacing allowing manure to pass through
- Termite resistant and extremely durable
- Can be cut around obstructions such as chutes and columns

THE CHOICE
OF LIVESTOCK
PROFESSIONALS

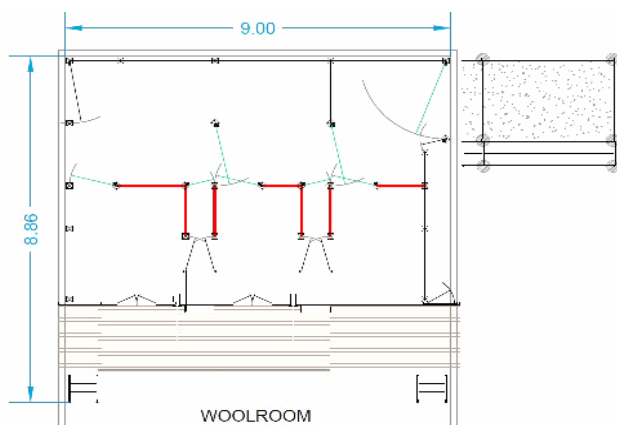
SHEARING SHED FITOUT - 2 STANDS

The following designs are a starting point for your operation to give an idea of design options and yard features available.

Designs can be modified to suit your requirements and features or equipment can be included or subtracted in the final design. We can incorporate existing fences and infrastructure as part of our custom design service as well as offer sections of these designs such as the working area.

This document is the property of Proway Livestock Equipment Pty Ltd. and cannot be copied, distributed, transmitted or presented (electronically or otherwise) to any third party, supplier, fabricator or alternative contractor without prior written consent from Proway Livestock Equipment Pty Ltd.

2 Stand Straight Board, 116 head, 9mW shed



Minimum Shed for Fitout: 18.0mL x 12.0mW x 4.0mH

Grating area: 76 SQM

Filled on-grating capacity: 116 head (based on 2.5 woolly sheep per SQM)

Catching pen capacity: 34 head (based on 2.5 woolly sheep per SQM)

Holding pen capacity: 82 head (based on 2.5 woolly sheep per SQM)

Grating: 1200mm above ground, 900mm clearance across bearers

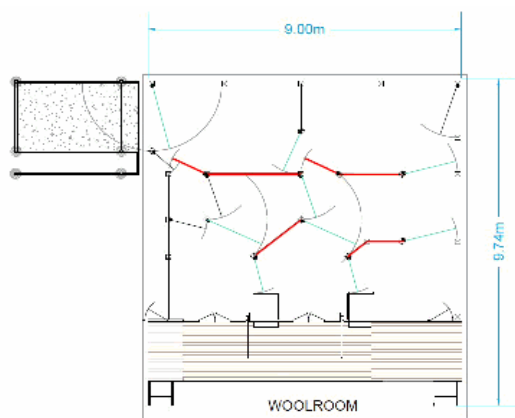
Key Design Features:

- Raised Straight Board Lane Fill with Handrail
- Sloping catching pens
- Mix of timber & FRP composite plastic grating
- Concrete ramp into shed with single walkway
- Communal countout pen under grating

Fitout Only

\$73,835.00

2 Stand Straight Board (Dovetail), 141 head, 9mW shed



Minimum Shed for Fitout: 18.0mL x 9.0mW x 4.0mH

Grating area: 66 SQM

Filled on-grating holding capacity: 141 head (based on 2.5 woolly sheep per SQM)

Catching pen capacity: 31 head (based on 2.5 woolly sheep per SQM)

Holding pen capacity: 110 head (based on 2.5 woolly sheep per SQM)

Grating height: 1200mm above ground, 900mm clearance across bearers

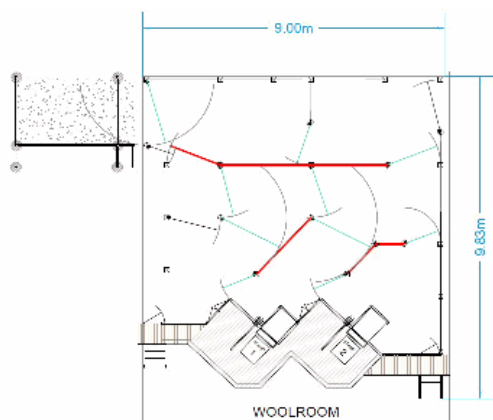
Key Design Features:

- Raised Straight Board with Handrail
- Sloping catching pens
- Mix of timber & FRP composite plastic grating
- Concrete ramp into shed with single walkway
- Communal countout pen under grating

Fitout Only

\$77,705.00

2 Stand Sawtooth, 161 head, 9mW shed



Minimum Shed for Fitout: 18.0mL x 9.0mW x 4.0mH

Grating area: 67 SQM

Filled on-grating capacity: 161 head (based on 2.5 woolly sheep per SQM)

Catching pen capacity: 32 head (based on 2.5 woolly sheep per SQM)

Holding pen capacity: 129 head (based on 2.5 woolly sheep per SQM)

Grating: 1200mm above ground, 900mm clearance across bearers

Key Design Features:

- Raised Sawtooth Board with Handrail
- Sloping catching pens
- Mix of timber & FRP composite plastic grating
- Concrete ramp into shed with single walkway
- Communal countout pen under grating

Fitout Only

\$87,170.00

Pricing current as of 21 May, 2025 - All prices are GST exclusive and subject to change without notice.

Prices include delivery, pegging out of post holes, and custom design service. Excludes digging of holes, loading ramps and handlers, construction and concrete. ProWay offer a construction service by fully insured and inducted contractors. ProWay can provide a fixed construction price based on the job parameters

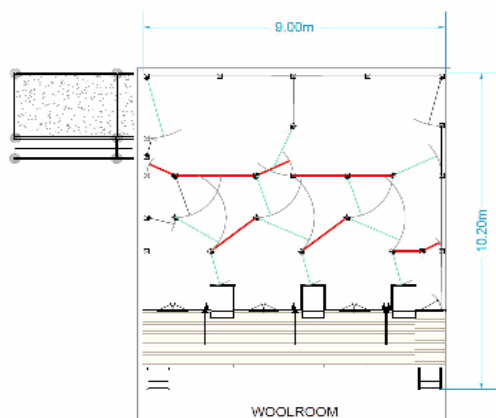
SHEARING SHED FITOUT - 3 STANDS

The following designs are a starting point for your operation to give an idea of design options and yard features available.

Designs can be modified to suit your requirements and features or equipment can be included or subtracted in the final design. We can incorporate existing fences and infrastructure as part of our custom design service as well as offer sections of these designs such as the working area.

This document is the property of Proway Livestock Equipment Pty Ltd. and cannot be copied, distributed, transmitted or presented (electronically or otherwise) to any third party, supplier, fabricator or alternative contractor without prior written consent from Proway Livestock Equipment Pty Ltd.

3 Stand Straight Board (Dovetail), 124 head, 9mW shed



Minimum Shed for Fitout: 18.0mL x 9.0mW x 4.0mH

Grating area: 67 SQM

Filled on-grating holding capacity: 124 head (based on 2.5 woolly sheep per SQM)

Catching pen capacity: 42 head (based on 2.5 woolly sheep per SQM)

Holding pen capacity: 82 head (based on 2.5 woolly sheep per SQM)

Grating height: 1200mm above ground, 900mm clearance across bearers

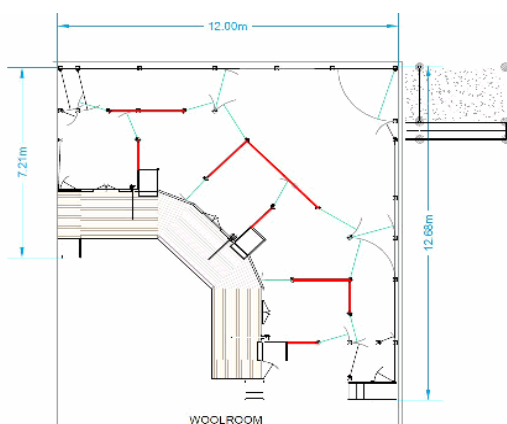
Key Design Features:

- Raised Straight Board with Handrail
- Sloping catching pens
- Mix of timber & FRP composite plastic grating
- Concrete ramp into shed with single walkway
- Communal countout pen under grating

Fitout Only

\$84,210.00

3 Stand Curved Board, 200 head, 12mW shed



Minimum Shed for Fitout: 24.0mL x 12.0mW x 4.0mH

Grating area: 94 SQM

Filled on-grating capacity: 200 head (based on 2.5 woolly sheep per SQM)

Catching pen capacity: 54 head (based on 2.5 woolly sheep per SQM)

Holding pen capacity: 146 head (based on 2.5 woolly sheep per SQM)

Grating: 1200mm above ground, 900mm clearance across bearers

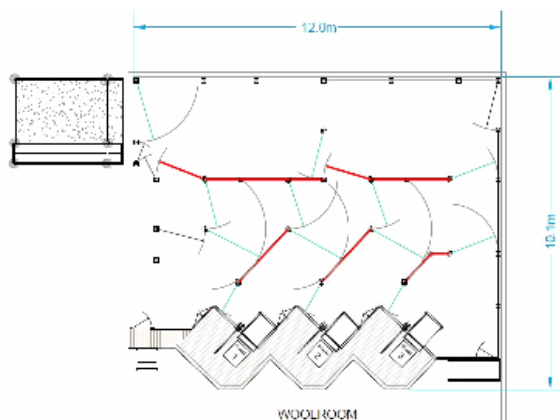
Key Design Features:

- Raised Curved Board with Handrail
- Sloping catching pens
- Mix of timber & FRP composite plastic grating
- Concrete ramp into shed with single walkway
- Communal countout pen under grating

Fitout Only

\$110,895.00

3 Stand Sawtooth, 226 head, 12mW shed



Minimum Shed for Fitout: 18.0mL x 12.0mW x 4.0mH

Grating area: 102 SQM

Filled on-grating capacity: 226 head (based on 2.5 woolly sheep per SQM)

Catching pen capacity: 51 head (based on 2.5 woolly sheep per SQM)

Holding pen capacity: 175 head (based on 2.5 woolly sheep per SQM)

Grating: 1200mm above ground, 900mm clearance across bearers

Key Design Features:

- Raised Sawtooth Board with Handrail
- Sloping catching pens
- Mix of timber & FRP composite plastic grating
- Concrete ramp into shed with single walkway
- Communal countout pen under grating

Fitout Only

\$114,150.00

Pricing current as of 21 May, 2025 - All prices are GST exclusive and subject to change without notice.

Prices include delivery, pegging out of post holes, and custom design service. Excludes digging of holes, loading ramps and handlers, construction and concrete. ProWay offer a construction service by fully insured and inducted contractors. ProWay can provide a fixed construction price based on the job parameters

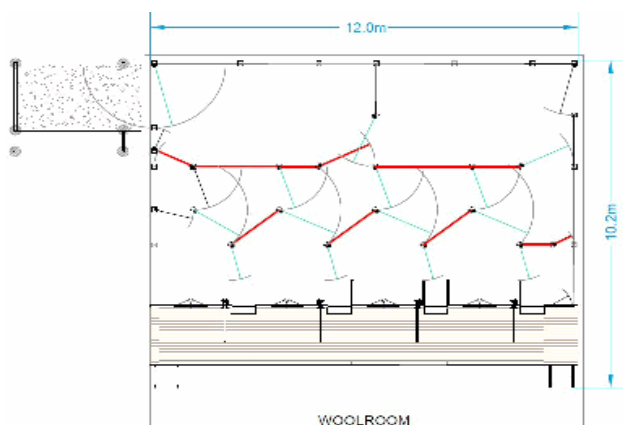
SHEARING SHED FITOUT - 4 STANDS

The following designs are a starting point for your operation to give an idea of design options and yard features available.

Designs can be modified to suit your requirements and features or equipment can be included or subtracted in the final design. We can incorporate existing fences and infrastructure as part of our custom design service as well as offer sections of these designs such as the working area.

This document is the property of Proway Livestock Equipment Pty Ltd. and cannot be copied, distributed, transmitted or presented (electronically or otherwise) to any third party, supplier, fabricator or alternative contractor without prior written consent from Proway Livestock Equipment Pty Ltd.

4 Stand Straight Board (Dovetail), 206 head, 12mW shed



Minimum Shed for Fitout: 24.0mL x 12.0mW x 4.0mH

Grating area: 90 SQM

Filled on-grating holding capacity: 206 head (based on 2.5 woolly sheep per SQM)

Catching pen capacity: 60 head (based on 2.5 woolly sheep per SQM)

Holding pen capacity: 206 head (based on 2.5 woolly sheep per SQM)

Grating height: 1200mm above ground, 900mm clearance across bearers

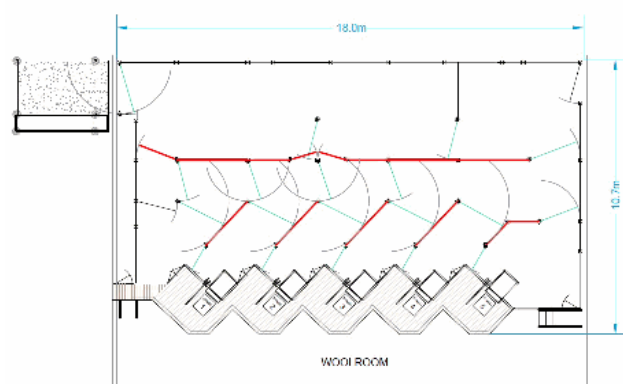
Key Design Features:

- Raised Straight Board with Handrail and Dovetail style fill
- Sloping catching pens
- Mix of timber & FRP composite plastic grating
- Concrete ramp into shed with single walkway
- Communal countout pen under grating

Fitout Only

\$104,910.00

4 Stand Sawtooth, 277 head, 15mW shed



Minimum Shed for Fitout: 24.0mL x 15.0mW x 4.0mH

Grating area: 123 SQM

Filled on-grating capacity: 277 head (based on 2.5 woolly sheep per SQM)

Catching pen capacity: 62 head (based on 2.5 woolly sheep per SQM)

Holding pen capacity: 215 head (based on 2.5 woolly sheep per SQM)

Grating: 1200mm above ground, 900mm clearance across bearers

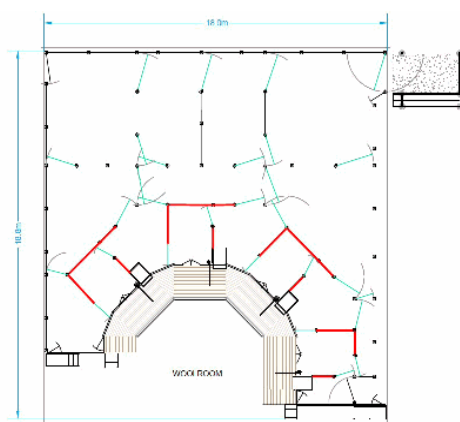
Key Design Features:

- Raised Sawtooth Board with Handrail
- Sloping catching pens
- Mix of timber & FRP composite plastic grating
- Concrete ramp into shed with single walkway
- Communal countout pen under grating

Fitout Only

\$135,750.00

4 Stand Curved Board, 564 head, 18mW shed



Minimum Shed for Fitout: 24.0mL x 18.0mW x 4.0mH

Grating area: 258 SQM

Filled on-grating capacity: 564 head (based on 2.5 woolly sheep per SQM)

Catching pen capacity: 68 head (based on 2.5 woolly sheep per SQM)

Holding pen capacity: 496 head (based on 2.5 woolly sheep per SQM)

Grating: 1200mm above ground, 900mm clearance across bearers

Key Design Features:

- Raised Curved Board with Handrail
- Sloping catching pens
- Mix of timber & FRP composite plastic grating
- Concrete ramp into shed with single walkway
- Communal countout pen under grating

Fitout Only

\$214,585.00

Pricing current as of 21 May, 2025 - All prices are GST exclusive and subject to change without notice.

Prices include delivery, pegging out of post holes, and custom design service. Excludes digging of holes, loading ramps and handlers, construction and concrete. ProWay offer a construction service by fully insured and inducted contractors. ProWay can provide a fixed construction price based on the job parameters

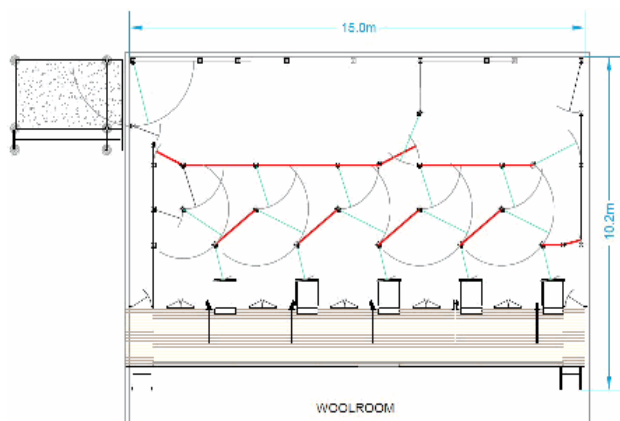
SHEARING SHED FITOUT - 5 STANDS

The following designs are a starting point for your operation to give an idea of design options and yard features available.

Designs can be modified to suit your requirements and features or equipment can be included or subtracted in the final design. We can incorporate existing fences and infrastructure as part of our custom design service as well as offer sections of these designs such as the working area.

This document is the property of Proway Livestock Equipment Pty Ltd. and cannot be copied, distributed, transmitted or presented (electronically or otherwise) to any third party, supplier, fabricator or alternative contractor without prior written consent from Proway Livestock Equipment Pty Ltd.

5 Stand Straight Board (Dovetail), 253 head, 15mW shed



Minimum Shed for Fitout: 24.0mL x 15.0mW x 4.0mH

Grating area: 116 SQM

Filled on-grating holding capacity: 253 head (based on 2.5 woolly sheep per SQM)

Catching pen capacity: 73 head (based on 2.5 woolly sheep per SQM)

Holding pen capacity: 180 head (based on 2.5 woolly sheep per SQM)

Grating height: 1200mm above ground, 900mm clearance across bearers

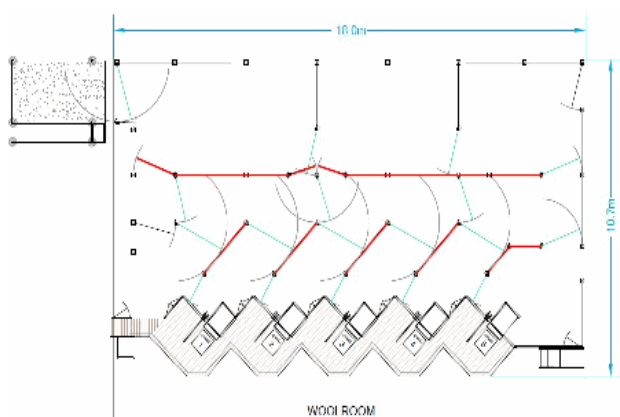
Key Design Features:

- Raised Straight Board with Handrail and Dovetail style fill
- Sloping catching pens
- Mix of timber & FRP composite plastic grating
- Concrete ramp into shed with single walkway
- Two communal countout pens under grating

Fitout Only

\$126,795.00

5 Stand Sawtooth, 370 head, 18mW shed



Minimum Shed for Fitout: 24.0mL x 18.0mW x 4.0mH

Grating area: 161 SQM

Filled on-grating capacity: 370 head (based on 2.5 woolly sheep per SQM)

Catching pen capacity: 77 head (based on 2.5 woolly sheep per SQM)

Holding pen capacity: 293 head (based on 2.5 woolly sheep per SQM)

Grating: 1200mm above ground, 900mm clearance across bearers

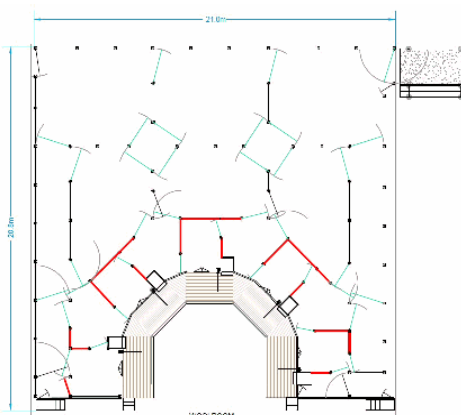
Key Design Features:

- Raised Sawtooth Board with Handrail
- Sloping catching pens
- Mix of timber & FRP composite plastic grating
- Concrete ramp into shed with single walkway
- Two communal countout pens below grating

Fitout Only

\$167,220.00

5 Stand Curved Board, 855 head, 21mW shed



Minimum Shed for Fitout: 36.0mL x 21.0mW x 4.0mH

Grating area: 342 SQM

Filled on-grating capacity: 855 head (based on 2.5 woolly sheep per SQM)

Catching pen capacity: 85 head (based on 2.5 woolly sheep per SQM)

Holding pen capacity: 770 head (based on 2.5 woolly sheep per SQM)

Grating: 1200mm above ground, 900mm clearance across bearers

Key Design Features:

- Raised Curved Board with Handrail
- Sloping catching pens
- Mix of timber & FRP composite plastic grating
- Concrete ramp into shed with single walkway
- Two communal countout pens under grating

Fitout Only

\$255,410.00

Pricing current as of 21 May, 2025 - All prices are GST exclusive and subject to change without notice.

Prices include delivery, pegging out of post holes, and custom design service. Excludes digging of holes, loading ramps and handlers, construction and concrete. ProWay offer a construction service by fully insured and inducted contractors. ProWay can provide a fixed construction price based on the job parameters