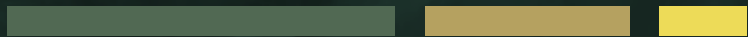


The logo for ProWay Livestock Equipment, featuring the brand name in a bold, sans-serif font with a stylized arc to the right of the word 'ProWay'. Below it, the words 'Livestock Equipment' are written in a smaller, simpler font. The entire logo is white and set against a dark teal background.

**ProWay**  
Livestock Equipment

# PROCESS OVERVIEW

CATTLE & SHEEP YARDS



# FOREWORD FROM THE DIRECTORS

By investing in ProWay facilities, you can have confidence that your yards are constructed with quality materials and are built to last.

As part of our commitment to your ProWay facility, we have created this guide to ensure you are fully briefed on the processes and responsibilities of all stakeholders throughout the project.

We encourage you to carefully read the following guidelines and recommendations to familiarise yourself with the steps for a high-quality outcome.

Safety, in particular, is very important to us. A shared duty of care is required to ensure the safety of all parties involved in the construction of your facility.

This guide also serves to inform the safety requirements within each key stage of the construction and installation process.

If you have any questions, our team of professional Stockyard Designers and Area Representatives are available for advice, should you wish to discuss elements of the process at any stage.

Finally, thank you for choosing ProWay to design and build your stock handling facilities. We trust your business will benefit from our industry leading design and construction quality, and we are confident that your new yards will provide you with efficiency, safety and profitability advantages for years to come.

# CONTENTS

FORWARD FROM THE DIRECTORS	2
INTRODUCING THE TEAM	4
WHAT TO EXPECT	6
PROJECT TIME-LINE	8
FINANCIAL RESPONSIBILITIES	10
SAFETY FIRST	12
ENHANCING YOUR FACILITIES	14
<b>PRELIMINARY WORKS</b>	<b>21</b>
EXISTING INFRASTRUCTURE	22
EXISTING SERVICES UNDER AND ABOVE GROUND	24
SITE PREPARATION	26
THE MANUFACTURING PROCESS	32
PEG OUT	36
DELIVERY AND SAFE UNLOADING PRACTICE	38
<b>INSTALLATION</b>	<b>41</b>
HOLE DIGGING	43
INSTALLATION OF NEW SERVICES	46
CLIENT AND CONTRACTOR ON SITE AGREEMENTS	48
ON SITE ACCOMMODATION	50
ON SITE MACHINERY & CRANE HIRE	51
ROOF OVER CONSTRUCTION	52
STOCK YARD CONSTRUCTION	54
CONCRETING	56
<b>COMPLETION &amp; MAINTENANCE</b>	<b>59</b>
COMPLETION & SIGN OFF	61
OPERATING YOUR FACILITIES	62
STOCK YARD MAINTENANCE	64
LOCATIONS & CONTACTS	66

# INTRODUCING THE TEAM

## CONTACT US:

Inside this pack are business cards for your job contacts.

For all other enquiries please contact our head office on:

**1300 655 383**

Throughout the process of your yards being designed, manufactured and installed, ProWay have a dedicated team working towards a quality result.

At key project stages, the ProWay team will be in touch with you to ensure you are adequately informed and aware of the responsibilities for all involved.

While there are many team members working on different aspects of the job, the following key contacts and departments will be in touch directly with you.

### Stockyard Designer

Your experienced project manager. Your Designer is your go to person for all design and job queries.

### Area Representative

The team members under the Designer. They will ensure your job is on track, send through information and peg out your yards.

### Administration / Accounts

Our admin staff will send you updates throughout the process. Please contact admin for any billing or general enquiries.

### Dispatch / Truck Driver

Controlling all outgoing freight, they will be in touch closer to delivery. Our truck drivers will also call you when dispatched.

### Yard Builder / Contractor

Your Designer will put you in touch with your contractor and co-ordinate a commencement date for construction.





# PROCESS TIMELINE

## WHAT TO EXPECT

**For many of our customers installing new yards is something that may only happen once in a generation. We understand this opportunity is likely an exciting time for you and your business.**

This guide is intended to step you through each stage of the process and outline the responsibilities of all stakeholders including yourself, ProWay staff, contract yard builders, and third-party trades and service providers such as earth movers, plumbers, electricians and professional concreters

On top of this guide, you will find job specific information related to your custom facility including:

- Project Planner
- Final Design
- Site Preparation Guide
- Hole Digging Guide

You and your facilities are important to us. Throughout the guide we have highlighted key stages, recommendations and considerations that will make sure your facilities will provide you with maximum satisfaction once installed.

While we work hard to minimise delays and ensure a smooth process throughout your project, the unexpected can occur. This guide will also help highlight the timing of each stage in your project and your main points of contact at ProWay should you need advice or assistance at any stage.

The following time-line on pages 8-9 is an example of the typical stages/responsibilities of a ProWay facility. Please keep in mind that responsibilities can vary depending on the job requirements.

These tasks are covered in more detail throughout this document and should you have any concerns or require further information please speak to your Designer.

# PROCESS TIMELINE

Please note this is only a basic representation of roles and hold points based on an average design and construct job. In some cases responsibilities may change based on job requirements and suppliers of external services (Shed builders, earth movers, hole digging contractors etc.) Should you have any questions about the timeframe of your facilities, please contact your stockyard designer.

STAKEHOLDER RESPONSIBLE	DESIGN	PRELIMINARY WORKS	INSTALLATION	COMPLETION
DESIGN REFINEMENT				
RETURN SIGNED SUMMARY SHEET				
INITIAL 10% DEPOSIT (pg 10)				
JOB ALLOCATED TO MANUFACTURING QUEUE (pg 32)				
CLEAR EXISTING INFRASTRUCTURE (pg 22)				
LOCATION OF UNDERGROUND SERVICES (pg 24)				
SITE PREPARATION (pg 26)				
ORDERING AND MANUFACTURING (pg 32)				
PEG OUT (pg 36)				
PAYMENT OF YARDS DUE (pg 10)				
DELIVERY (pg 38)				
UNLOADING (pg 38)				
HOLE DIGGING (pg 43)				
INSTALLATION OF NEW SERVICES (pg 46)				
CLIENT AND CONTRACTOR ON SITE AGREEMENT (pg 48)				
MACHINERY AND CRANE HIRE (IF APPLICABLE) (pg 51)				
ROOF OVER CONSTRUCTION (IF APPLICABLE) (pg 51)				
STOCK YARD CONSTRUCTION (pg 54)				
CONCRETING POSTS AND SLAB (pg 56)				
CUSTOMER AND CONTRACTOR SIGN OFF (pg 61)				
FINAL PAYMENT (CONSTRUCTION) DUE (pg 10)				

# FINANCIAL RESPONSIBILITIES

Within the terms and conditions outlined in the summary sheet, there are key payment milestones throughout the supply and construction of your project.

- 10% deposit for confirmation of your order. This will establish a position in ProWay's manufacturing queue.
- Payment of the remaining 90% is required prior to delivery.
- **Payment of construction is due on practical completion.**

Additional costs required for site preparation and services such as earthworks, electrical, plumbing, and air lines, are your responsibility and should be considered early in the process.

Supply of ready mix concrete throughout the construction process is your responsibility. Please inform the construction contractor of your preferred concrete supplier who will arrange quantities and timing of deliveries.

**It is important to acknowledge that significant changes to the signed off design can entail additional costs. Other factors out of ProWay's control can impact the cost of the overall project.**

Below are examples of items and conditions that may lead to added expenses depending on what is required for your project.

- The cost of hole digging is not included in the construction costs, as we can't anticipate the variation in the site foundation at different sites. Some of our contractors have the capacity to dig the holes, however, this is an external arrangement that can be made directly with the contractor (outside of the quoted construction price). Letting your Stock Yard Designer know early that you would prefer the contractor to dig the holes will help us assign a contractor who is equipped with an adequate auger driver.
- In some cases, roof structures may require a crane to lift into place. The cost of the crane hire is the customers responsibility.
- Safe holding of supplied yards and equipment after delivery is the customer's responsibility. This includes any costs incurred for security, storage and safe keeping. If there are concerns for theft or damage at the proposed delivery site please speak to your Designer and let them know.

- You are not responsible for providing accommodation or subsidising any costs associated with accommodation for the contractor. However, if you do have quarters that can be made available to the contractor and their team it can speed up the construction process. It is not an expectation to provide accommodation. The contractor will be in contact with you closer to the construction date.
- **Please note that any work by the contractor outside of the scope of works detailed in the summary sheet can incur additional expense.**



## We are here to help

**ProWay is made up of a team of professionals who can assist you with any project related concern. We have been building stockyards since 2000 and have a wealth of experience we are happy to pass onto our customers.**

The overall installation and construction of your project has numerous factors that can impact on the final result, your Stockyard Designer or Area Representative will be available to answer questions and advise on your project through to completion.

Throughout the process of ordering and manufacturing we have a number of checklists and quality procedures in place to help ensure your project is a success.

# SAFETY FIRST



At ProWay, we are committed to safety in our workplace, the safety of those who install ProWay stock yards and the long-term safety of the products and facilities we design and build for your business.

The health and safety of everyone involved in a ProWay project is vital at all stages. Neglecting workplace health and safety (WHS) can take a heavy financial toll on any business, not to mention the human cost of work-related illness, injury, and fatality. In our continually changing workplace environment, the effective assessment and management of WHS issues is paramount.

Providing a safe working environment from our manufacturing headquarters, throughout your construction and into the future of your operation is one of our highest concerns.

We believe that it is our duty to ensure that the safety risks involved in the process are recognised and prevented. Your cooperation in ensuring the safety of the area plays a key part in our delivery, and below are some important points to take note of:

- ProWay are AS4081 accredited which is the benchmark to assess Workplace Health & Safety Management systems for organizations.
- All parties involved are obligated to adhere to Safe Work practices. Keeping you, your family and employees, ProWay staff and sub-contractors safe on ProWay construction sites is our highest priority.
- At peg out, the Area Representative will tape the site with red danger tape and erect construction signs. At this stage, the site must be kept clear of livestock, children and unnecessary vehicles until sign off/completion.

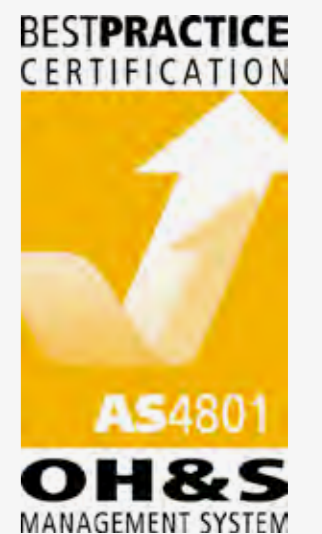


- Make sure yourself and your staff adhere to safety warning signs when in proximity of the construction site.
- Throughout the construction process there are several risks including mark out pegs, sharp materials, heavy equipment and machinery, tripping hazards, open holes, and working from height hazards. Our contractors will undertake risk assessments prior to commencing all work on site.
- Identify where any underground services are located. This must be confirmed by a professional service locator.
- Always "Dial Before You Dig" by phoning 1100. This is a free national referral service designed to prevent injury as well as damage and disruption to Australia's infrastructure networks.
- Overhead and buried power lines are a serious hazard and all parties on site must be made aware of where these are located.
- On completion please adhere to maintenance checks of your facilities to ensure the yards provide a safe workplace for years to come.

**Personal Protective Equipment (PPE) must be worn on all ProWay construction sites.**



ProWay are committed to safety in the workplace. We have earned industry accreditation for OH&S (AS4801)



# ENHANCING YOUR FACILITIES

While ProWay design, manufacture and install industry leading equipment and facilities, there are a number of enhancements you can add to your stock yards to make them state of the art in terms of safety, efficiency and functionality.

While these additions can increase the cost of your facility in the planning and installation stage, they can provide future profitability advantages such as improved labour efficiency, animal welfare, flexibility to adapt new equipment, operator safety, reduced maintenance and increased longevity.

Modern day stockyards are evolving and moving closer to a second office environment with computers, remote technology, data capture, vet treatment, plumbing, electrical lighting and appliances. Professional livestock operations are no longer looking at these technologies as optional add-ons, they're becoming a necessity in the planning and installation of new facilities.

## Key considerations that you may consider beneficial to your project include:

### ■ Extra concrete

While we supply your design with a recommended slab area, some of our customers choose to lay more concrete to improve drainage and cleaning, foundation stability and reduce tripping hazards. In some cases, ProWay clients will elect to use a professional concreter for foundations such as retaining walls or if they would like to achieve greater reinforcement. Should you wish to increase your slab area or use a concreter other than the ProWay contractor, it's a good idea to discuss this with your Designer prior to construction.

### ■ Lighting

Loading stock at night is not uncommon and lighting will make this safer and more efficient. Some operations opt to muster and work stock at night or early morning during hot periods of the year. Having a well lit facility makes this more feasible.

### ■ Overhead and/or underground power

Electrical outlets can make your facility a more flexible workplace. Should you wish to connect power, consider how and where lines will run. We can work with you to ensure new power connections fit around your new facilities. Hanging power outlets from a roof can be a good alternative to fixed power points as they offer flexibility and don't pose a potential bruising threat to stock.

### ■ Storage in yards

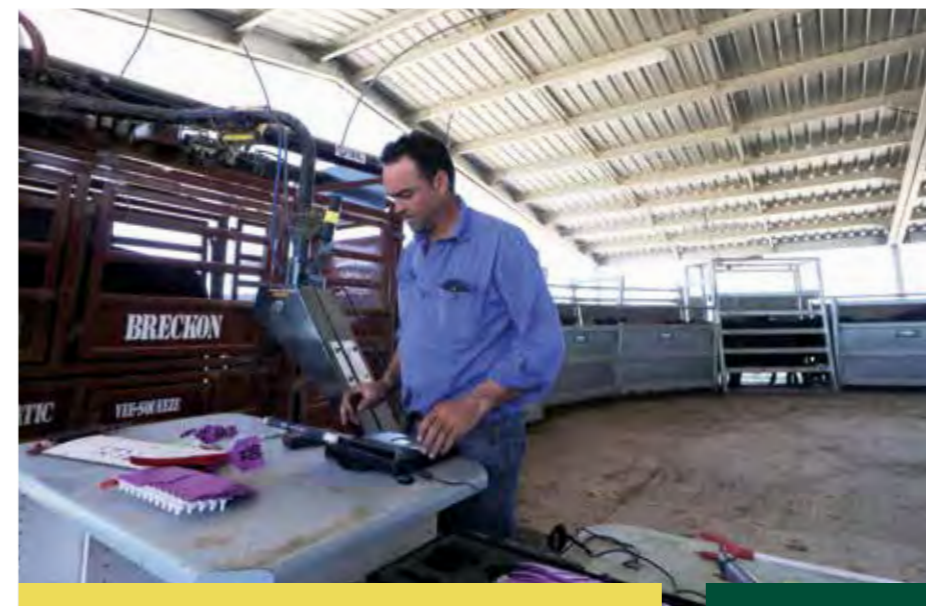
Something as simple as a storage cupboard can make all the difference in keeping your workplace tidy and organised. A stable surface to sit a laptop is worth considering. Many vet treatments and applicators should be stored in a cool dry place, as well as some basic tools for yard maintenance and husbandry practices.

### ■ Refrigeration

A small fridge in the yards can be useful for storing vaccines and medications.



Lighting mounted on top of the ramp gantry provides a safe workplace throughout the night.



A sturdy cupboard or desk in a stock free working area lets you store husbandry equipment and work safely and efficiently.

■ **Roof coverage**

More commonly we are seeing ProWay customers opt for roof cover over their working areas and yards. A roof structure offers weather protection from rain and direct sun, dry storage for livestock, increased longevity of the yards and equipment, water capture, additional structure for yards and a mount point for services such as power, plumbing and air lines. Should you wish to include a roof over your facility, talk to your Designer who will ensure the yards align with the roof structure.

■ **Water capture**

Consider runoff from your roof structures and how this can be stored and utilised.

■ **Water points**

Water at your facility can be used for several purposes including stock water in troughs, sprinklers to keep dust down and yards cool in dry conditions, and high-pressure cleaning of concrete pads and equipment. Consider water early in the planning phase of your new yards to ensure plumbing installation can roll out with the rest of the facility.

■ **EID tags and data capture**

New facilities can be a catalyst for improved retention of animal data. Weighing and documenting traits of individual animals is becoming more prevalent in modern stock yards. It is worth researching the most suitable software and equipment for your operation.

■ **Air lines**

Many modern handlers, drafters and crushes use compressed air to operate pneumatic functions. If you are installing pneumatic equipment or are considering air operated systems in future, it's a good idea to plan the delivery and installation of compressed air lines and an adequate air compressor for this purpose. Air lines can be buried or fitted in roof structures to avoid tripping hazards caused by loose hoses.

■ **Vehicle access**

Vehicle access in and around your facility is an important consideration during the design and site preparation stage. What vehicle clearance is required into specific pens? Is there sufficient truck access for loading and unloading?

■ **Laneways to new facilities**

Planning and building fenced laneways can improve the efficiency of mustering to your new yards and ultimately get livestock back on feed in a timely manner. Green field sites may require significant fencing to ensure the yards are functional on practical completion.

■ **Access gates/manways**

Personal access in new yards can dramatically increase functionality and safety when processing livestock. ProWay design stock yards with this in mind, however, you may wish to include further access points in areas of high traffic or potential risk. Mapping your pathways on the design will help make decisions on access gate and manway placement.



If you have a roof, consider the runoff and how you can use the water effectively.



Troughs are worth planning early as panels may need to be customised to suit.

**WATER CAPTURE AND  
ROOF COVERAGE**

It's important to consider all the features you need for a functional workplace and how you will bring stock to the yards. We needed a setup that would let us work cattle in all conditions, so laneways, power, lighting, water points and air lines for remote gates were factored in at the design stage

Jono Ashby  
Thomas Foods Rural

**LANE-WAY**

**LIGHTING**

**POWER AND AIR LINES**

**WATER POINTS**



The most important thing to consider when building new yards is to prepare your pad. Get your levels right, get your drainage right, and you can work stock in all conditions.

**Nigel Kerin**

Kerin Agriculture, Yeoval NSW

# PRELIMINARY WORKS



# EXISTING INFRASTRUCTURE

As part of your site preparation responsibility, your site must be cleared of existing infrastructure that is not part of the confirmed design.



**In some cases, there will be sections of your old facility that need to stay and aspects that need to be cleared. Your Designer can provide advice on exactly what needs to go as required.**

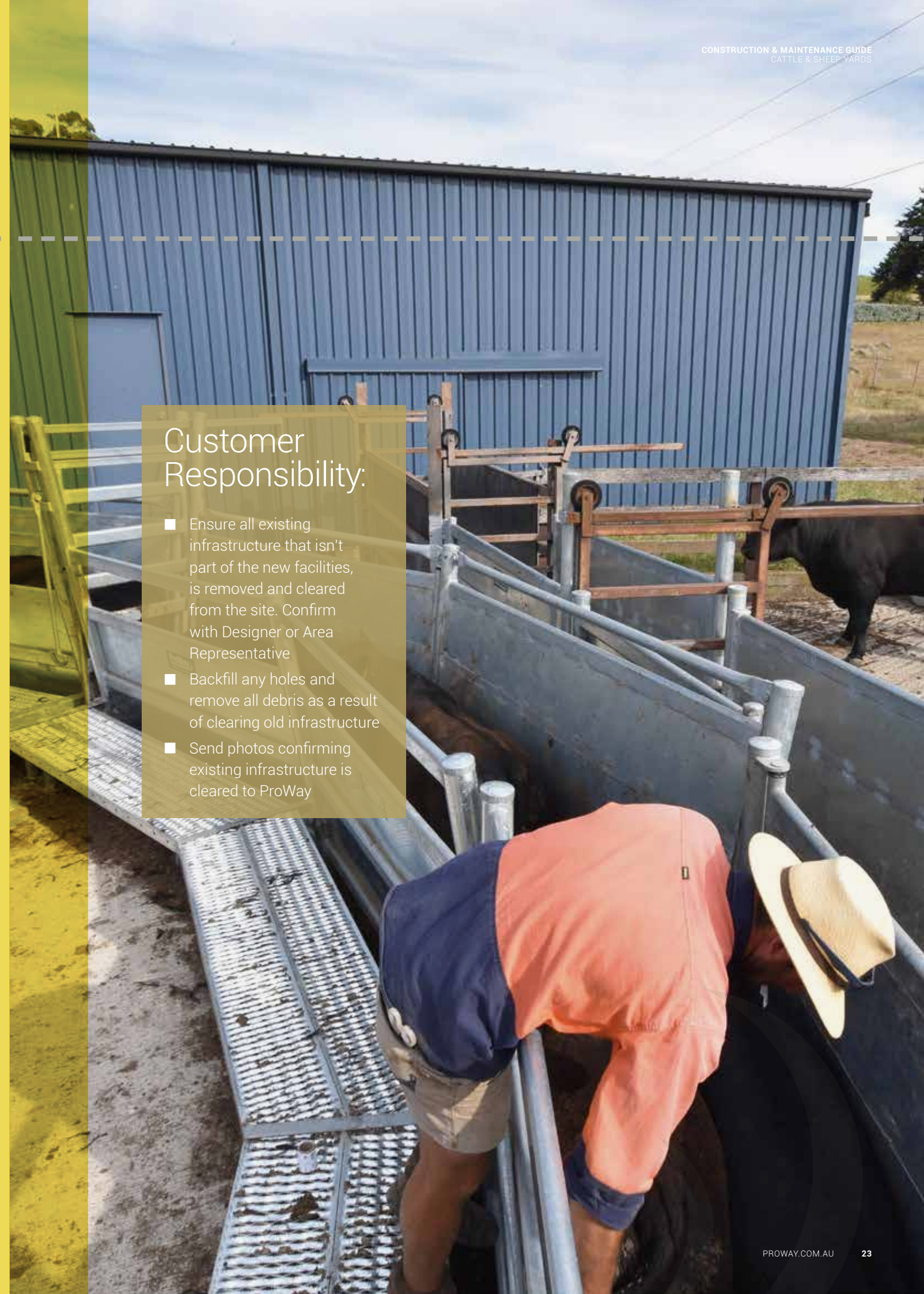
We understand that in some cases, your old facility will need to be operational up until the new yards are built. We will work with you to ensure the window of construction fits in with your husbandry schedule. Once the project time-line has been

confirmed it is your responsibility to adequately remove the agreed sections and prepare the pad for the new facilities.

Your ProWay Area Representative will help you determine what existing infrastructure should remain or be removed and will request photos of the site to confirm works can commence.

## Customer Responsibility:

- Ensure all existing infrastructure that isn't part of the new facilities, is removed and cleared from the site. Confirm with Designer or Area Representative
- Backfill any holes and remove all debris as a result of clearing old infrastructure
- Send photos confirming existing infrastructure is cleared to ProWay



# EXISTING SERVICES UNDER AND ABOVE GROUND

The accurate mapping and marking of above or underground utilities at your site is essential for ensuring workplace safety and must be completed before any excavating or construction work begins. It is the client's responsibility to ensure any underground services are professionally identified and as a precaution we require mains power be switched off during hole digging.



## IMPORTANT

Never "assume" you know the exact location or depth of underground assets.

Second guessing can lead to damage, expensive repairs, injury and fatality.

As the property owner/manager, you are responsible for ensuring an accredited utility locator confirms any underground assets.

Service utilities can include lines for electricity, natural gas, fuel lines, water mains, storm water and sewer pipes and telecommunications services.

Other items or hazards can include water meters, vent shafts, and manholes.

If you have concerns about overhead or underground services interfering with your facilities, please make it known to your Designer or Area Representative as soon as possible.

We will work with you to ensure the yards and infrastructure will work around these services where possible. In some cases, it may be more feasible to consider an alternative site or make modifications to the design to avoid interference.

All parties share in a duty of care to prevent damage and to reduce the risk of injury.

Keeping ProWay employees, contractors and yourself safe is our highest priority.

Dial Before You Dig is a free national referral service designed to assist in preventing the risk of damage and disruption to utility services and importantly reducing the risk of injury to yourself and workers on your site.

Overhead power lines are a serious hazard. All parties must be notified of the potential risk whenever coming onto the site. For the safety of those operating machinery or building a roof structure in close proximity to power lines, a spotter must be made available.



Look up and live. Overhead power-lines are a serious danger throughout the construction of your yards.



## IMPORTANT

As a final safety precaution, ProWay insist that all mains power supplies with any possibility of underground power in the vicinity be disconnected during hole digging on site. It is simply not worth the risk.

### Points of Contact:

Your ProWay Designer and Area Representative are available for advice regarding service location and site preparation phase.



## Responsibility overview:

- Call 1100 prior to commencing any digging or earthworks which involve cutting into the pad.
- You are responsible for contracting a certified & accredited service locator to complete this stage before excavation work can begin.
- In the case that services interfere with the confirmed design, your ProWay Designer must be contacted so arrangements and modifications can be made.
- Located services must be marked with paint and confirmed with your ProWay Area Representative or Designer.
- A spotter must be available when working in close proximity to power lines.
- Power to the property must be isolated during any hole digging.

### The Essential First Step

Lodge a FREE Dial Before You Dig enquiry at least one week prior to starting your excavation or site project.

**To learn more, visit the website: [www.1100.com.au](http://www.1100.com.au)**



Preparing your pad correctly results in better drainage, improved stock flow and longevity of infrastructure for generations to come.

# SITE PREPARATION

Your site preparation must be completed prior to pegging out.

**ProWay products and facilities are built to last. Ensuring your facilities give you the greatest satisfaction over their lifetime begins with a well-prepared foundation that is suitable for your operation.**

While earthworks are an additional cost it is important to be proactive early in the process.

ProWay has extensive experience in yard construction and it is impossible to properly improve your foundation once the facilities are pegged out and/or installed.

A good foundation is particularly important for the concreted areas of your yards, this will minimise the risk of cracking and improve the strength and longevity of your facility.

Poor site preparation will lead to greater long-term costs, delays and difficulties in the construction as well as a higher risk of injury for yourself, your employees and livestock.

Bringing fill in after construction is not recommended. With your yards erected, it's not possible to level and compact the site adequately, and can cause uneven ground, tripping hazards and poor drainage. Your yard height will also be lower as you raise the ground level.

While you are responsible for site preparation and associated costs, we are available to help guide you through the process.

It is very important that your site is ready before we peg out the holes. An average facility might have 80-150 holes which are marked with a steel peg and paint. Manoeuvring earth moving machinery around ProWay's mark out pegs is not possible.

We will work with you to ensure the process runs within a coordinated time frame.



ProWay will provide a site preparation guide for you, detailing the pad dimensions and recommended slope. Good excavators can accurately calculate the required gravel and how best to level the pad.

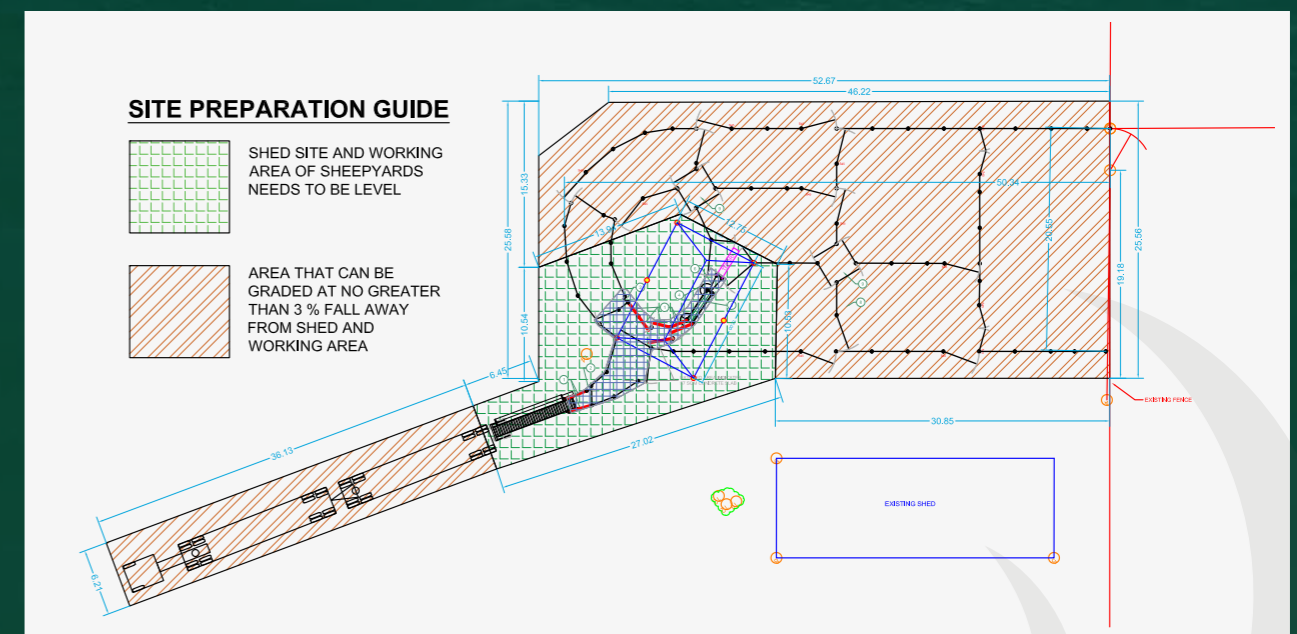
### Recommendations for a well-prepared site:

- Though it may seem obvious, the first and most important step in preparing your site is ensuring it's well positioned for truck and vehicle access and considers drainage. These issues should be covered early in the design process.
- The working area of your yards is the most complex and should be as level as possible to ensure all parts can be assembled accurately. This is particularly critical for working races, forcing yards handlers and vet crushes in both sheep and cattle yards.
- Where possible, the slope of the pad in the outer areas should not exceed a 3% gradient. Greater fall than this will result in severe stepping of your fence lines and gates.
- If the new yards are replacing old yards on the same site, top soil and manure needs to be scraped back to a firm base before new gravel is laid.
- When cutting and filling the site, avoid using the cut top soil as fill to prevent future erosion.
- ProWay recommend a DGS40 road base for cattleyards and DGS20 for sheeppads.
- Ideally the pad should be rolled to 95% compaction. A professional earth mover can achieve this.
- Soft spots that are spongy should be dug out, relayed and re-compacted. This will prevent cracking and sinking in the future.
- Ensure the extent of the pad has been cleared of all debris and excess fill.
- Ensuring the base is adequately prepared and compacted as per the provided guide allows the construction to be completed to a professional standard.

## Site preparation guide

Similar to the example shown, a job specific Site Preparation Guide is provided to you outlining the recommended earthworks. It will also detail any fence lines and structures that will need to stay or should be removed prior to peg-out and construction.

Your Designer will discuss the items in your Site Preparation Guide with you including issues relevant to your job.





**IMPORTANT**

- Always be aware when heavy machinery is in use.
- If you are conducting significant earth moving, ensure a dial before you dig call is made to avoid hitting underground power or services.
- Once your site preparation is underway it is a good idea to keep livestock off the proposed site.

**Frequently asked questions**

**Q1. What is the ideal pad for a set of yards?**

ProWay recommend a 20mm road base (DGS20) for sheep yards and a 40mm road base (DGS40) for cattle yards. Your site preparation guide will stipulate the required level areas and recommended slope for drainage. Depending on your location, the type and availability of rock and pad base materials can vary. Your local quarry and an experienced earth mover can offer advice on suitable foundations.

**Q2. Can ProWay advise on truck and vehicle access?**

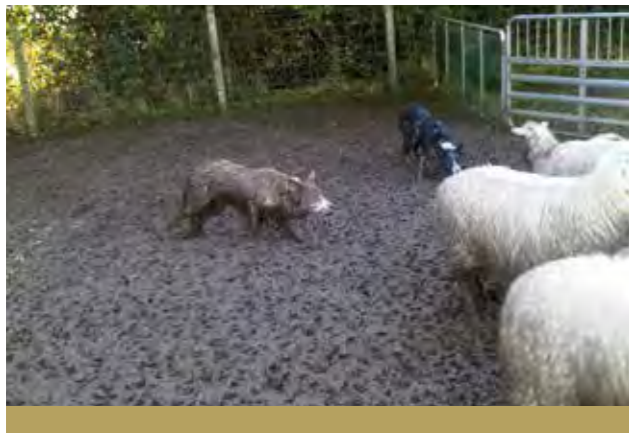
If required, your Site Preparation Guide can include semi-trailer and b-double turning circles to ensure adequate access for loading and unloading livestock. We recommend at least 3m excess road base around the perimeter of the facility for vehicle access.

**Q3. I have existing yards where the new yards are going. What is the time-frame to remove the old yards and have the site prepared before the new yards are built?**

We work with you to ensure the construction of your facility has minimal impact on your husbandry schedule. It is best to let your Area Representative and Designer know early of the key dates you are working to. Generally, we like to peg out the facility as close to the site being finished as possible. Once the holes are dug we'll ensure the construction phase is undertaken within an agreed time-frame.

**Q4. Is site preparation mandatory for construction?**

Laying a gravel foundation is not an enforced requirement, however it will improve the longevity and functionality of your facility. Some clients choose not to put down gravel in country that is free draining, low rainfall or on sandy soil. In some cases, clients opt for sprinkler systems rather than significant earth works to keep dust down. It is the client's responsibility to sign off on adequate foundation prior to pegout.



It's no fun working livestock in the mud. Invest in a suitable foundation and ensure your facilities are ready to work all year round.



# THE MANUFACTURING PROCESS

Once your design is confirmed, your facilities will advance in the queue for manufacture. The manufacturing process comprises three core elements including: CAD drafting, fabrication and quality control. The time-frame for completion varies with every job, depending on design complexity, customisation and scale. You will be notified of an estimated delivery time once your job enters the workshop queue.



## Drafting ordering and engineering

The design of your stock handling facilities is critical to achieve an efficient and functional workplace. As each design is unique, the fabrication of your facilities will start with our experienced draftsmen and engineers, who prepare the technical drawings for manufacturing and provide additional quality checks specific to your job.

Our Draftsmen ensure your yards are accurately measured to

create cutting lists and workshop orders specific to your design. Time-frames may be adjusted at this stage to incorporate handlers, crushes and unique equipment that may require further technical drawing or development.

ProWay has a proud history of innovation and our drafting and engineering team are constantly improving our product range and developing new concepts. Our innovation team

rely on industry knowledge and feedback from our customers to ensure our products remain at the forefront of the industry and continue to improve stock handling practice across Australia and the world. We rely on our customers to test new products as your feedback is invaluable.

Once the ordering and drafting element is completed, your Designer will do a final quality check prior to manufacturing in our workshop.

## Quality Manufacturing

Your equipment is manufactured at our workshop in Wagga Wagga, NSW.

From your unique design we order and fabricate the products specific to your operation.

All ProWay products are made with a combination of quality materials and manufacturing best practices including:

- Galvanised steel and heavy-duty materials for longevity
- Quality hardware for hinges and latches

- Anti-bruise materials for posts and rails.

- Visual barrier materials that improve stock flow.

- Australian standards for WH&S and animal welfare.

- Environmental compatibility.

ProWay products are proudly Australian made. Our fabrication and drafting team comprise of engineers, draftsmen, tradesmen, apprentices and labourers who work hard to ensure a quality result.

ProWay also performs quality management checks and controls throughout the fabrication process.

Following the completion of your order, a final quality assurance process is undertaken to ensure quality fabrication and accurate quantities for installation are ready for delivery.

While your ProWay Area Representative or Designer will provide tentative delivery estimates, our Dispatch Manager will confirm the exact delivery date closer to the time.



## Points of Contact:

Should you have any enquiries regarding the ordering, engineering or manufacturing process, please contact your Designer or Area Representative who will provide further information as required.

## Frequently Asked Questions:

### Q1. When will my yards be going through the workshop?

Upon signing up and paying a 10% deposit, your yards and equipment enter our workshop schedule which is monitored by our operations manager, foreman and workshop management team. Your job is allocated a time slot in our manufacturing queue and allocated a time-frame for fabrication. We endeavour to keep to this schedule, to ensure delivery is in line with your initial estimated time-frame.

### Q2. Can I make changes to my design?

If you require significant changes to your original design we will do our best to accommodate your requests. As a result, this may impact the time-frame of delivery and incur additional cost to your project. The sooner you can identify any changes to your design, the more likely we can make sure any new equipment makes the scheduled delivery. Please ensure you contact your Stockyard Designer as soon as possible if you would like to modify the design.

### Q3. Can you customise a product to suit my operation?

While ProWay have a vast range of products in our library, we understand there may be instances when you wish to modify our standard range or engineer something unique. It is best this is discussed prior to sale with your Designer. ProWay have a product development process which assesses the viability of unique concepts and requests in terms of safety, strength, usability, repeatability, cost and market potential. Significant product modifications and new product development may impact the time-frame of your delivery and incur additional costs to your project.



All ProWay products are drawn using industry leading CAD software before fabrication.

# PEG OUT

ProWay take responsibility to accurately mark each hole required for the construction of your facilities. Once the site preparation is complete, please notify your Designer or Area Representative and we will coordinate a time to mark out the holes.

Your Area Representative will ask you to provide photos of the site prior to coming out. This is to ensure the site is clear and ready to be marked out. We can work around existing yards, fences or other structures that are being incorporated into your yards. All other structures that are not part of the final facility should be removed completely before pegging out.

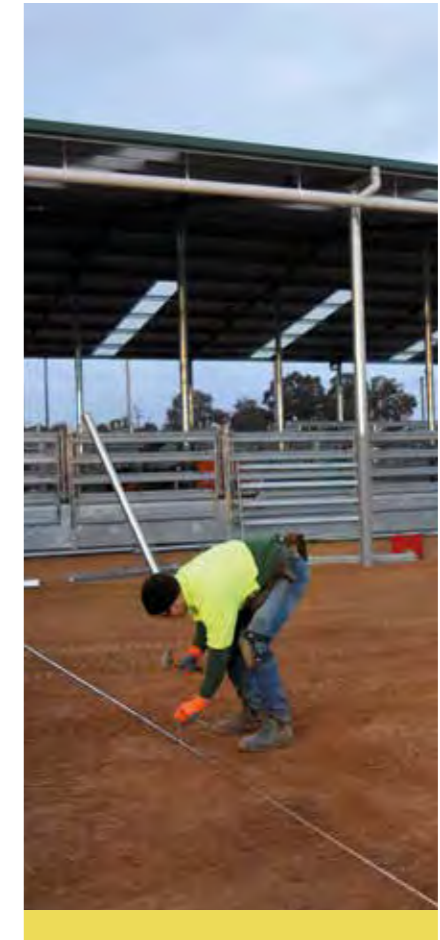


Accurate marking is critical to the function of your yards. We mark each hole with a steel peg and mark out paint.

We use theodolite surveying equipment for millimetre accuracy when marking out the holes. This ensures your yards are built and function as intended.

In most cases your area rep will not require assistance for pegging out the yards unless otherwise specified.

Once the yards are marked out, it's best to keep off the pad unless required. ProWay ask that livestock and children are kept off the pad at all times.



A combination of measuring tapes and survey equipment is used to peg out the yards accurately and efficiently.





**IMPORTANT**

Inside this pack is your ProWay delivery checklist. Please take the time to fill it out and return it to:

[information@proway.com.au](mailto:information@proway.com.au)  
Alternatively please call your ProWay Designer or Area Representative.

# DELIVERY AND SAFE UNLOADING PRACTICE

## Timing

In most cases, delivery will not occur until the site is fully prepared. In some instances however, delivery before site preparation or pegout may occur. With this in mind, it is important to understand the requirements for delivery and safe unloading well in advance.

**Your ProWay Area Representative or Designer may provide tentative delivery estimates, however our Dispatch Manager will confirm the actual date of delivery.**

## Unloading your ProWay equipment

ProWay deliver equipment Australia wide with a combined fleet of ProWay vehicles and external freight companies. We place a heavy emphasis on safety and require your cooperation. While we aim to deliver your facilities efficiently, safe unloading practices minimises risk and damage to your equipment.

Depending on the size of your yards, unloading can take several hours to complete.

Your equipment may need to be unloaded as individual items or in small bundles out of stillages.

On delivery, you are responsible for ensuring:

- Adequate equipment is available for safe unloading
- A capable worker to operate the unloading equipment
- A safe working environment
- **A secure location**

On arrival, our driver will run you through a safe unloading statement before unloading.

It is important whoever is responsible for unloading the equipment is competent and has addressed the risks.

Before unloading please check the following:

- The site is adequately level
- The site is adequately stable to drive and lift without risk of sinking, bogging or tipping equipment
- There is space to leave the equipment close to the yard site
- There is adequate truck access to the site
- You have pallets or timbers to stack the equipment onto once unloaded. This helps prevent weather damage prior to construction

## Load configuration

For safe loading and transport, ProWay deliver your yards and equipment in heavy duty stillages (large steel cages) which can weigh up to 6 tonnes each. You will not be required to unload a stillage in a single lift. Your equipment is separated into manageable stacks within each stillage.

Most orders will require a medium sized tractor or telehandler with pallet forks with a lift of at least 3.6m and a 1.5 tonne lift capacity. To remove these safely a 3.6m lift is required.

In specific orders a lift height capacity of 4.3m may be required to unload.

Loading ramps, crushes, handlers and other large prefabricated products are generally loaded as individual items on the truck and will require adequate equipment for safe unloading.

**In all cases our dispatch manager will contact you leading up to the delivery to confirm the date of delivery and that you have access to adequate machinery for unloading.**

You will receive plenty of warning before the delivery day and an approximate time the driver expects to reach your property.

### Points of Contact:

1. For delivery questions and clarifications, please contact your ProWay Area Representative or Designer.
2. For delivery planning our transport manager will be in contact with you closer to the delivery date.
3. The ProWay truck driver will contact you when leaving our workshop to confirm the estimated time of arrival and best access to the yard site.



### IMPORTANT

#### Take unloading safety seriously:

- Always ensure you can see the ProWay driver and follow their instructions at all times.
- Ensure your equipment is adequate for the job and you, or your staff, are fit to operate it.
- Ensure your load is stable. Never attempt to lift more than you are instructed to or are comfortable with.
- Wear your seatbelt. In the case of a tip over accident, a seatbelt can save your life.
- Do not attempt to lift a loaded stillage.
- Don't rush

# INSTALLATION



# HOLE DIGGING

Hole digging is external from the construction cost documented on the summary sheet. This is due to variation in the pad, soil and rock that can be encountered across many different sites. It is the client's responsibility to ensure holes are accurately dug for construction.

We recommend engaging a professional contractor with a bobcat or similar to dig the holes as accuracy is crucial to ensure your yards are constructed properly. Most ProWay contractors are equipped with hole digging machinery and can dig the holes for you at an agreed rate. Should you require the ProWay construction contractor to dig the holes, please notify your Designer as early as possible.

Hole digging can be undertaken by any capable party however accuracy and timeliness are important to the project.

Your Area Representative, Designer and construction contractor will be in contact regarding key dates for construction. All holes need to be cleaned out prior to construction starting.

Holes must be dug accurately and straight to ensure your yards fit in place and are constructed as per the design. In the case of inaccurate hole placement, the construction of your facility will be impacted and likely cost more.

The spoil must be cleaned out thoroughly and removed from the pad. This will ensure your yards have adequate ground engaging strength and your pad remains fit for purpose - free of clay and soil.

## General hole digging instructions

- Follow the hole digging guide provided in this pack.
- Undertake a dial before you dig
- The electrical power mains to the property or the work area must be turned off during the drilling process to alleviate the danger of electrocution.
- Identify above or below ground hazards.
- Ensure the holes are accurately dug at the correct depth and width.
- Clean excess spoil from around the hole and remove from the pad.
- If your yards are marked out with steel pegs. Please collect these as we will pick them up and reuse them.

## IMPORTANT

**Inside this pack is your ProWay hole digging guide. Please refer to this when digging your footings or pass it on to the contractor or individual responsible for digging the holes.**

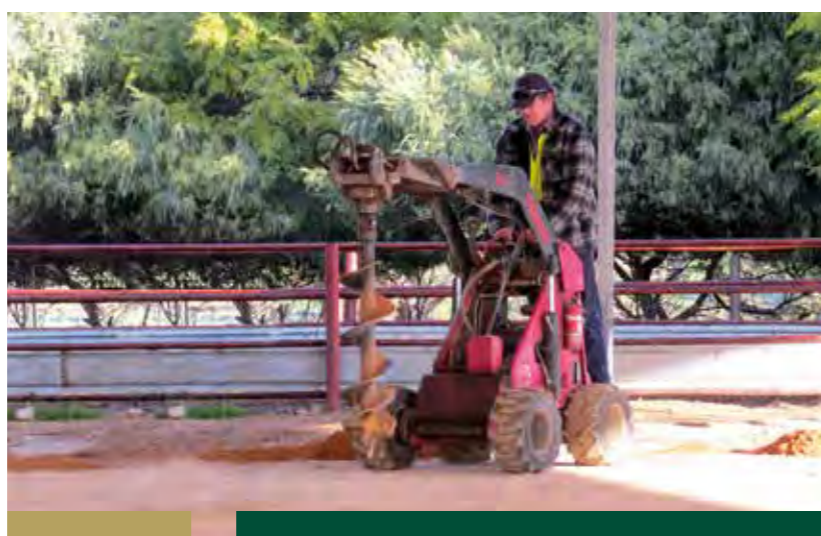
## Site Preparation:

- It's important for the structural integrity of your yards to have secure footings.
- To achieve this, your site preparation should be completed as per the recommendations in this guide (pg 26-30)
- If your site is not properly compacted, or is not stable due to high moisture or sandy soil, your footings will need to be deeper and larger to compensate. This will incur additional hole digging and concrete costs.

Please note that any works undertaken by a ProWay contractor to complete the digging and/or cleaning/barring out the holes is additional work and billable to you.

If you wish to use a ProWay contractor for hole digging, they will negotiate their rates and invoice you directly.

ProWay do not take responsibility for any excess charges or works undertaken in relation to hole digging or earth works at any stage of construction.



### Associated risks:

Remember this is a construction site and all access should be restricted to avoid injury from falling into holes. Please refer to the Safety First section earlier in this guidebook.

Ensure a dial before you dig call is made prior to commencing hole digging.

To minimise risk of electrocution, mains power at the site must be turned off during the drilling process.

### Points of contact:

Contact your Area Representative for advice and confirmation regarding hole digging.

Should you engage an external contractor ensure they are adequately equipped and understand the requirements outlined in your hole digging guide.

### Frequently asked questions:

#### Q1. What should we do if we hit rock?

Ideally the holes need to be drilled to specification for the yards to maintain structural integrity. If you are likely to hit rock we suggest contacting a professional excavator who is experienced in your local area. They will be equipped to drill through rock, jackhammer or in extreme cases use controlled blasts to break through.

#### Q2. Can I use a tractor auger to dig the holes?

Tractor augers tend to move when drilling. It is very important to ensure the accuracy of the holes. Incorrect hole positions will impact the design and may incur further labour costs to re-drill or bar out the holes and will potentially use more concrete. If you use a tractor auger, we recommend using a spotter to ensure holes are drilled accurately.

#### Q3. Can I dig the holes larger than recommended?

As long as you don't dig smaller holes than recommended you will be adding strength to your yards by increasing the hole size. In some cases, customers will dig holes with a 320mm or 350mm auger which is fine. Please note, you will require more concrete than estimated should your hole size increase.

# INSTALLATION OF NEW SERVICES



Should you wish to install new services in the yards such as electricity, plumbing and/or compressed air lines, it is a good idea to consider this prior to the new yards being installed. The yards and particularly the slab area can be restricting to work around once installed.

These services are external from the supply and installation of your ProWay facility but will offer added flexibility and functionality to your yards for years to come.

Conduit, and plumbing lines pose a tripping hazard when left on the ground and are likely to be damaged by livestock if left exposed.

We recommend trenching these services at the time of hole digging, to ensure they do not impose on footings for the yards.

ProWay are happy to help mark a path of least resistance for services on your design which can be followed by an excavator and service professional.

ProWay however take no responsibility in the installation or professional advice of these services. In all cases an adequately trained professional trades-person should undertake the installation of underground services.



# CLIENT AND CONTRACTOR ON SITE AGREEMENTS

Being actively involved in the process from start to end ensures you are aware of the activities and steps involved in the construction of your yards. It also provides an opportunity to make additional decisions you feel are necessary.

Prior to arrival, any additional contract works should be discussed and where required agreed with the contractor. These can include:

- Site preparation requirements
- Safe working area
- Hole digging
- Extra concreting or welding
- Roofing requirements
- Labour assistance
- Use of any farm machinery
- On-site accommodation for workers
- Any other additional works.

We encourage you to visit the site, monitor progress and make decisions with the contractor if you wish to further customise your options (e.g. height of walkways, outer yard panel heights etc). Please note, however, that any additional requirements not covered by the initial scope of works will need to be priced separately.

**Please know that there is no expectation from ProWay or the contractor for you to provide any labour to complete the job. This is the contractor's responsibility and they are being paid to complete construction to a satisfactory level.**



## IMPORTANT

Unless you have elected to build your own facilities, your ProWay contractor is responsible for all works associated with the erection of your yards and equipment supplied by ProWay.

The price you have agreed to pay for construction with ProWay should not change unless the scope of works changes.

# ON-SITE ACCOMMODATION

If available, on-site accommodation can be provided to help provide a more convenient working environment for the contractor during the construction phase.

You are not responsible for providing any accommodation or for subsidising any costs associated with accommodation. However, making use of available on-site accommodation (i.e. shearers quarters, spare farm cottage etc) is often a desirable option as it can minimise travel time for the contractor and allow for more time on-site.

Should you know of accommodation close to the yard site such as a hotel or pub room, it is appreciated if you can discuss this with the contractor prior to construction commencing.



# ON-SITE MACHINERY & CRANE HIRE

If available, on-farm machinery (eg. tractor, forklift etc.) can be provided to expedite works by the contractor during the construction phase. Most contractors will have access to a skid-steer loader of their own to make construction more efficient.

It may be necessary to use on-farm machinery to assist in completing some aspects of the job (e.g. putting a loading ramp together, moving a crush into place, etc). The contractor will coordinate this with you.

In the case of roof installation (if applicable), an on-site crane to lift the roof into place may be required. The cost of the crane is external to the construction cost outlined in the terms and conditions. The contractor will talk with you regarding booking and time-frames for the crane. Your Designer can discuss this with you should you have any questions.

Please refer to your summary sheet for clarification of crane hire and roof construction. Due to the variance in crane requirements and job locations it is difficult for ProWay to include this cost in your project in advance. For further clarification please contact your Designer.

All plant equipment and machinery used on site should be in safe working condition and used only by capable operators and professionals. ProWay contractors should not operate any plant equipment that they do not supply themselves.

**As per your agreement with ProWay (please refer to the Quote Summary Sheet), some roofs may require a crane on-site to lift into place. As this cannot be anticipated in advance, you will be responsible for the cost of a crane should one be required.**



# ROOF OVER CONSTRUCTION (IF APPLICABLE)

In the case that you have purchased a roof over your facilities through ProWay or an external shed builder, this will likely need to be erected prior to the stockyards being built. ProWay will ensure the shed is pegged out in the correct location in relation to new and existing infrastructure.

Roof columns will often sit inside the yards and provide structural posts for panels and gates. It is important that the columns are accurately documented on the design and erected in the location agreed upon in the design phase.

If an external shed builder is designing and installing the roof structure, your ProWay Designer will work with them to ensure all parties are well informed and the columns are correctly located

Depending on your location, you may require a building permit for the roof structure. Please speak with your local council to confirm this prior to construction. ProWay can supply engineering drawings and footing documentation as required.

If ProWay are supplying and erecting the shed, the frame is often assembled on ground then lifted into place.

As per your agreement with ProWay (please refer to the Summary Sheet Terms and Conditions), ProWay sheds are supplied with gutters and downpipes to ground level. Down-pipe protection is available as an option to protect PVC from stock (if applicable).

Large roof structures may require a crane on-site to lift into place. If required the client is responsible for the cost of a crane.



Storm water plumbing is a key consideration if your facilities include a roof over the yards. ProWay roof structures include downpipes "to ground level" as standard, however depending on your plans to utilise water catchment, or where you would like runoff to go, a professional plumber may be required.

ProWay contractors are not qualified plumbers and as such, cannot provide a plumbing certificate for any downpipe installation.

Any trenching or plumbing configurations other than the

supplied gutter and storm water to ground level are outside of the standard ProWay shed scope.

Should you wish to run storm water overhead, or underground into a tank, or require a plumbing certificate, we recommend engaging a roofing plumber to ensure a professional finish.

PVC downpipes can be susceptible to damage from livestock if the shed columns are inside a holding yard. ProWay can supply galvanised downpipe protectors as an optional extra which can be screwed into the columns.



Down pipes other than the specified "to ground level" plumbing are outside of the scope of works and require a professional roofing plumber.

# STOCK YARD CONSTRUCTION

The construction of your facilities is one of the key advantages of ProWay stock yards. Due to the pre-fabricated components, your yards can be assembled efficiently and accurately as per your unique design. ProWay construction contractors are experienced in the professional installation of your yards and equipment.

As part of our commitment to a quality product, ProWay take care in employing and training professional teams and individual construction contractors who are competent in a variety of skills and installing our products.

ProWay recommend our trained contractors as there are numerous intricacies and practices that require training

and knowledge to reach a professional standard safely and efficiently.

We have seen cases where clients opt to build and erect their own products and yards themselves or employ services of a 3rd party to build their ProWay facilities. In some of these cases the standard of construction is reduced and has impacted the

functionality and safety of the facilities, as well as the timeliness and quality of construction.

In many cases this has also resulted in a greater upfront and long-term cost.



## IMPORTANT

In hot dry conditions we ask that you provide a fire cart and ensure a sufficient fire break around the yard site.

During total fire ban days, hot work on site must stop, including the use of welders and angle grinders.

Construction will commence in line with a pre-determined schedule once the site is ready. This includes all site preparation, hole digging, and equipment being delivered.

The time-frame for completion will vary depending on the size and complexity of the facilities. On average a set of yards will take between one and two weeks, however large facilities such as station cattle yards will often take longer. Your Designer and contractor will be able to estimate a time-frame depending on what's included.

In most cases, a set of yards will be assembled in stages relevant to concrete loads for post footings, ramps and slab areas. ProWay contractors will set out the panels and equipment and "float" components in the holes to achieve the correct ground clearance.

Generally, the working area is where the construction and assembly of the yards and equipment begins. It is often the most complex part of the facilities and requires a greater attention to detail

due to working races, gate configuration, forcing yards, draft areas and specialty equipment. The working area also forms the base point for the rest of the yards to expand from.

The outer holding yards can be built using the working area as a starting position and structural hold point. These outer panels and gates are generally more straight forward to erect and depending on the size of the job, these sections will be built in manageable batches to suit concrete loads.

# CONCRETING

Most of ProWay's permanent stock yards and equipment have ground engaging posts that need to be concreted in place. Those which do not will generally be designed to dyna-bolt or be chemset to a concrete slab. Ground engaging posts should be neatly domed off to encourage water runoff.



Concreted slabs ensure a lasting product, are easier to maintain and provide a safer environment for operators and livestock.

ProWay contractors are capable in the setup of formwork and the pouring of our recommended slab areas. In most cases ProWay recommends a 100mm slab poured in high traffic areas such as the lead-up to working areas, races, forcing yards, draft areas, and where handlers,

weighing equipment and crushes are located in the yards.

To reduce slip hazards the contractor will treat all slab areas with a light broom finish for better grip. This is applicable for all slab areas in sheeyards and operator working areas in cattleyards. Areas of stock traffic in cattle yards will have a stamped finish which reduces cattle slipping over in wet conditions.

**If you are looking to pour concrete that is outside of the 100mm depth specifications on your design or you require greater reinforcement than fibremesh, ProWay recommend engaging a third-party concreter for the slab areas.**

## Concrete responsibilities

As per the terms and conditions outlined in the summary sheet, it is the client's responsibility to pay for the supply of ready mix concrete to site. Prior to commencing construction, you will need to elect a local ready mix concrete supplier for the ProWay contractor to use.

Once your concrete supplier is confirmed, please let the construction contractor know which ready mix company you have engaged. As multiple concrete trucks will likely be ordered, contractors will arrange the quantities and timing of the concrete deliveries as required.

Your ProWay construction contractor is paid to lay the slab outlined in the design and summary sheet. Should you wish to increase the slab area, you will be liable to pay for the extra labour and concrete required. It is best to confirm the slab area with the contractor prior to commencing construction. This will make planning and ordering concrete more practical for the contractor and minimise downtime and waste.

Please note that while ProWay contractors are well experienced in concreting and will achieve a fit for purpose standard, they are not specialised concreters.

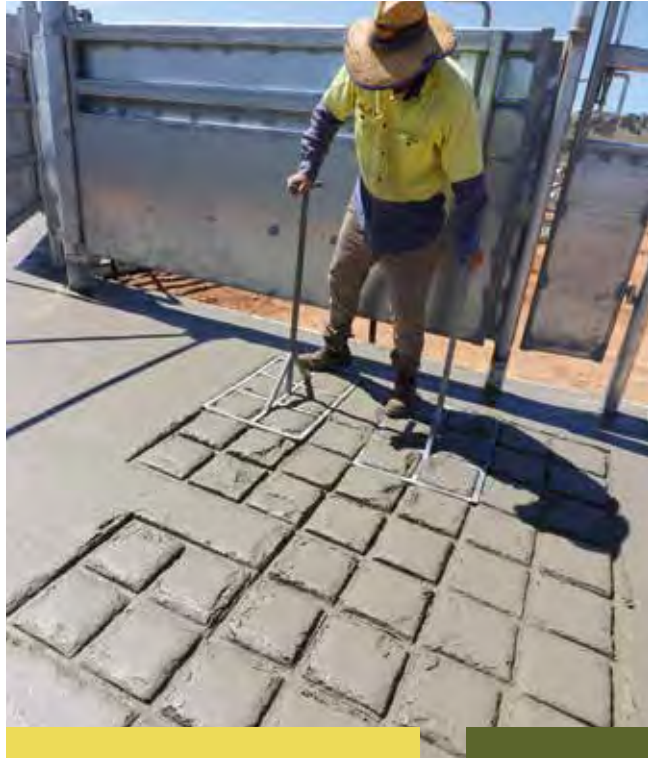
## Slab curing

Curing is a critical process to ensure your slab hardens correctly. Once laid, ready mix concrete can set quickly. A slab which is cured properly for 5-7 days will be significantly stronger.

If water evaporates too quickly the concrete's strength can be compromised and you may end up with cracks. Too much water can result in shrinkage and reduce the strength of the concrete.

If water is available on-site our construction crew will wet down the slab prior to leaving. During hot weather you may need to water the slab after the contractor leaves. The contractor will advise what is required.





Any concreted yards which cattle move through have a stamped finish to reduce slipping hazards.



Slabs have a broom finish for human and sheep traffic areas.



Concrete areas are boxed and screed at 100mm high as per the design specifications.

### Points of contact:

- ProWay Designer
- ProWay Area Representative
- Construction Contractor
- Concrete supplier (initially then the contractor will order loads as required)

### Frequently asked questions:

**Q1. When can I run stock through the working area/slab area?**

The recommended curing time is 5-7 days. It's best practice to avoid running stock over any slab areas within 7 days.

**Q2. What strength concrete do I need to order?**

ProWay recommends 25mpa concrete for all footings in the yards. A synthetic product called "fibre mesh" is a recommended additive to reduce cracking in slab areas. Most concrete suppliers will be able to add this to the load.

**Q3. How much concrete will I need to order for my yards?**

We generally estimate 1m<sup>3</sup> (one cubic meter) of concrete will cover 9m<sup>2</sup> (nine square meters) in the slab area – this allows for some dipping and variation in the pad levels with an average height of 100mm. Your design will outline the slab square meters which can be divided by a factor of 9 to give you a cubic meter estimate. In terms of concrete required for ground engaging posts, we estimate 1m<sup>3</sup> (one cubic meter) of concrete will pour 14 x sheeppaddock holes or 12 x cattleyard holes.

**Note: these calculations are based on our recommended slab and hole digging specifications.**

# COMPLETION & MAINTENANCE



# COMPLETION & SIGN OFF

The final step in the construction process is a walk-through inspection involving yourself and the contractor to ensure you are satisfied with the final product and any questions can be answered.

As part of ProWay's quality control process and commitment to you as our customer, we ask you to provide direct feedback to us by completing our Completion Feedback Form.

We invite you to communicate any feedback including all aspects of the project as well as your thoughts on the finish

quality and functionality of your new yards. Importantly we wish to hear of any defects or concerns that need to be immediately rectified.

We always like to visit the completed yards when practically available (usually when we are in the area next) to see the finished product.

Payment of construction is due on practical completion.

## Points of Contact:

Your contractor for any questions you may have about the construction finish.  
For all other questions and queries please contact your Area Representative or Designer.

# OPERATING YOUR FACILITIES

While ProWay design facilities to improve safety, working with livestock will always have a degree of risk. It is best practice to undertake a risk management approach for yourself and your team when working in the yards.



## Gate operation

Gates should only be opened in the direction they are designed to swing. Operators should note direction of hinges and not force gates to swing against their hinges.

ProWay design facilities which encourage stock-flow. Before moving stock through the facility; open all of the gates leading to the destination pen. By having the required gates open all the way through the system, you will achieve fluid movement of stock and reduce baulking.

Leave room in your yards to work stock effectively and to open gates. Pens should never be filled over 80%

## Moving livestock through your yards

Watch livestock vigilantly for unexpected behaviour, stress and temperament. Safety in the yards should be the number one priority for both operator and animals.

Avoid leaving single animals in a pen as this will cause stress and can lead to a fight or flight situation.

Ensure stock handlers are competent and confident working in the facility.

Avoid working in close proximity to aggressive animals and where possible move them through the yards from the opposite side of the fence.

When moving stock through yards and closing gates behind them; it is important that the operator keeps a visual on the animals and holds the gate with "strong arms and strong legs" until it is securely fastened with a bolt latch in the pocket and/or the chain is fastened securely.

Do not overfill yards, compressing livestock into a confined space can lead to animal stress and suffocation.

Keeping 20% of the pen empty when holding stock in a yard will improve movement of the animals out of the yard and will give you room to safely influence stock flow.

## Maintaining a safe workplace

It is important for stock handlers to be competent at the varied husbandry operations undertaken in the yards. This includes competency and experience in animal handling, animal welfare and WH&S.

When working with livestock stock handlers should always assess the animals before entering the yards.

This includes assessing:

- **Breed, gender, age and size** - Bulls and rams vs cows and ewes.
- **Physical attributes that may cause risk** - Horned animals, sick or injured stock.
- **Physiological state** - are the animals under stress, nurturing progeny or separated from the herd?
- **Background of the animals** - Are the livestock familiar with handling?

Stock handlers should be encouraged to take a risk management approach in the yards.

Before undertaking stock work, handlers must not only assess the stock they are working with but also:

- Ensure they are wearing adequate PPE
- Identify risks, address any hazards, and plan the best method to undertake the task.
- Judge whether the task it is too dangerous. If so notify a supervisor or look for a safer alternative.
- Perform the task once they've minimised the risks.
- Review the task on completion and assess whether there is anything they could do differently to minimise the risks in the future,
- Report any issues to their supervisor.

For more information visit:

[safeworkaustralia.gov.au/agriculture#animal-handling](https://safeworkaustralia.gov.au/agriculture#animal-handling)

# STOCK YARD MAINTENANCE

ProWay facilities are designed for many years of service. Like any equipment, some maintenance is required to help you maximise longevity and good working order.



## Materials

ProWay use a combination of pre-gal and hot dip galvanised components. This offers the best protection against corrosion, however rust can occur over the lifetime of the yards.

Rust can be combated by washing the area free of debris with clean water, a wire brush can then be used to clear the area of surface rust. Following this, apply a coating of zinc paint to affected areas to prevent further corrosion.

## Gates

ProWay standard gate hinges for sheep and cattle yards do not require any ongoing lubrication.

Sheep hinges are welded during construction for strength.

Cattle hinges operate with a hinge pin that runs through the spine of the gate.

Rotary force gates in both sheep and cattle yards have a grease nipple which should be greased should the gate become stiff to open or close.

## Latches

Standard cattle gates are fitted with various bolt latches which should be lubricated every 3 months with a light oil or WD40 type product to keep them working freely. Double gates in cattle yards have a heavy duty T slot and chain

Standard sheep gates are fitted with a chain and inverted T slot. For sheep gates which have been upgraded to a bolt catch, a light lubrication every 3 months will ensure smooth function.

## General stockyard maintenance checks

### Before every yarding:

- Check for signs of damage that may pose a threat to livestock and/or operator.
- Check for tripping hazards.
- Ensure staff are competent with handling livestock and understand the facility they are working in.

### Every 3 months:

#### Lubricate:

- Bolt Latches
- Grease nipples on moving parts (if applicable)

#### Check:

- That welds show no sign of rust protruding.
- That gates swing freely and are not binding.
- Levers are in good working order and working freely.
- Hinges for fatigue in the welds.
- Bolts are tight and tighten as required.
- Replace components as required.



# LOCATIONS & CONTACTS

## Head Office Australia

Free-call 1300 655 383  
Phone +61 2 6932 4000  
Fax +61 2 6931 8410  
Email [information@proway.com.au](mailto:information@proway.com.au)

### Address

19 Bomen Road  
Bomen NSW, 2650

### Postal Address

PO Box 85  
Wagga Wagga  
NSW, 2650